



PITCANOOK

'40

# *The Pitcanook*

'40

Volume 13

Published Annually by the

ASSOCIATED STUDENTS

Yakima Valley Academy

Granger, Washington

## CONTENTS

Administration

Classes

Organizations

Activities



## Foreward

» Ships symbolize progress; progress is the aim of Yakima Valley Academy. The theme of this book is ships — ships of life: Companionship, Scholarship, Leadership, and Friendship. We trust that these pages will bring back memories of the companionship of teachers; the progress in scholarship during your four years; the training in leadership obtained in the organizations; and the lasting wealth of friendship which blesses all your days here and hereafter.



## DEDICATION

» In appreciation of their constant companionship, their disseminating friendship, their example of leadership, and their encouragement in scholarship, we happily dedicate this, our PITCANOOK, to Mr. and Mrs. Meldrum.

—1940 PITCANOOK STAFF.



THE ENTRANCE

Some say: "I saw nothing  
To encourage our youth on,  
Just some cement and plaster,  
And a bit of wood and stone,  
A door with sturdy hinges,  
Draped with goods serene and white,  
With four windows of clear glass,  
Letting in the day's sunlight."

They don't see the marks of passing,  
As busy feet have hurried on,  
In the way of higher learning,  
To a fuller life beyond.  
For these lives have crowned with glory,  
The dull hue of wood and stone,  
And inspire the very entrance,  
To give our lives a truer tone.

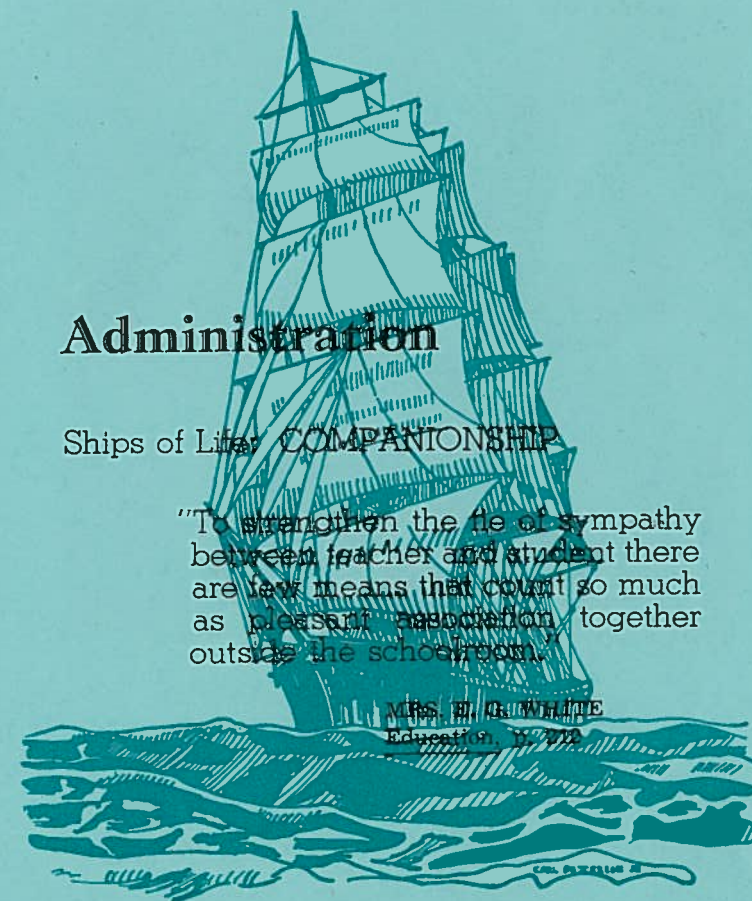
—M. GILBERT

## Administration

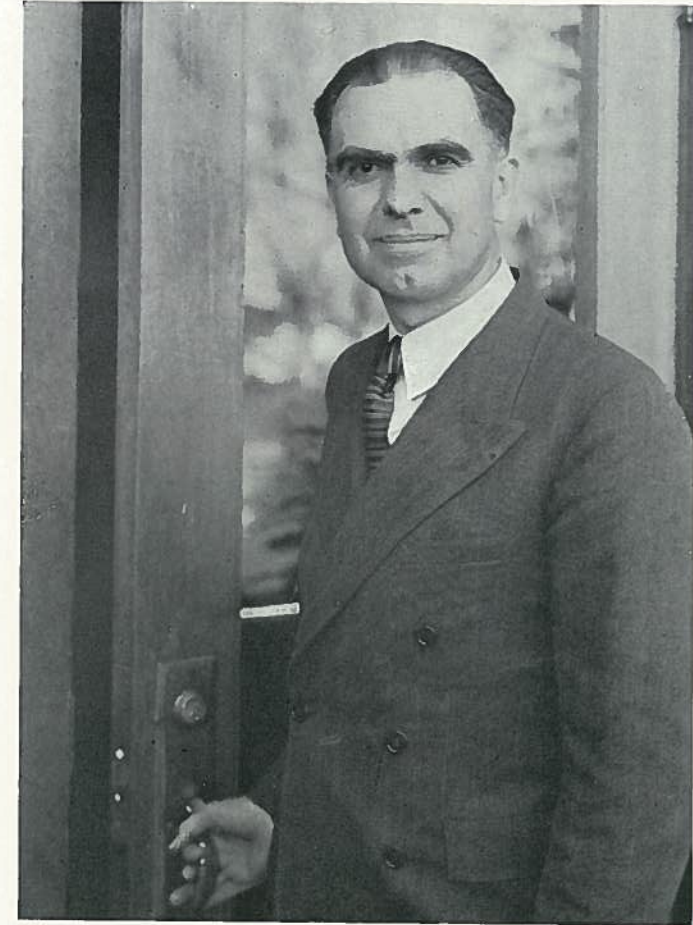
Ships of Life COMPANIONSHIP

"To strengthen the tie of sympathy  
between teacher and student there  
are few means that count so much  
as pleasant association together  
outside the schoolroom."

MRS. H. G. WHITE  
Education, N. Y. 1912







## OUR PRINCIPAL SPEAKS . .

Education opens a door to a world of greater usefulness and responsibility. He who serves humanity most and best passes through this door and receives the necessary preparation. True education means more than mental discipline, it also provides for physical training. It trains not only for this life, but it also prepares and makes ready for that greater and more abundant life which God desires to give to His children.

As you seniors leave us this year we wish you godspeed. You will be looked upon as representatives from the Yakima Valley Academy. We are sure you will be true to the high ideals and standards which this school represents. For twenty years the Academy has been serving the young people of the Upper Columbia Conference, and you are now joining the Alumni Class scattered all over the world, serving in the uplift of humanity.

When the doors again open on September 16, there again opens another opportunity for young people to receive a preparation and training for their life work. Old students are invited back to complete their courses. New students will fill in the ranks made vacant by those who have been graduated. To you we give a hearty welcome and hope we can all meet together on the opening day.

O. E. SCHNEPPER, *Principal*



## Faculty

H. E. Weaver, B. A.

Walla Walla College  
Emmanuel Missionary College  
University of Washington  
University of Oregon  
S. D. A. Theological Seminary

*Bible*

Lillian Riffel-Zumbaum  
Clinton Theological Seminary

*Matron*



Corinne Brenton-Coleman

Commerce  
Union College  
Pullman College

*Registrar, Typing*

## Faculty

Mildred Perry-Ward  
Vancouver College of Music  
*Piano, Voice*

V. V. Bramlet, B. A.  
Walla Walla College  
*Baking*



Everett F. Coleman, B. A.  
Union College  
*Mathematics, Science,  
Farm Manager*





## Faculty



Mildred Matterand, B. A.  
Walla Walla College  
*Dean, English*

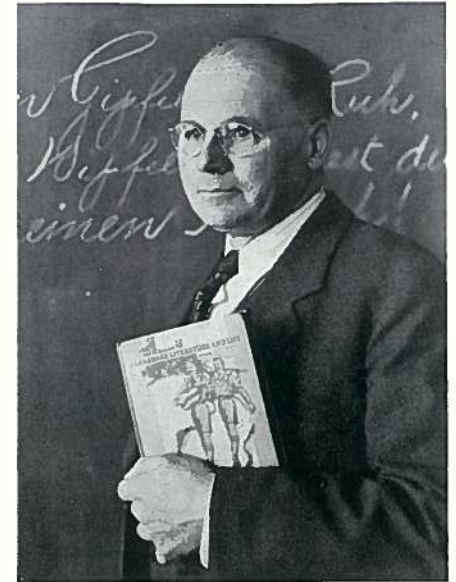


George W. Meldrum,  
M. A., B. A., B. A.  
Walla Walla College  
Willamette University  
University of Washington  
S. D. A. Theological Seminary  
*Dean, History, Bible*



Alta Harmer-Meldrum,  
B. A., B. M.  
Walla Walla College  
Conservatory Degree  
University of Washington  
Willamette University  
*English, Sewing*

## Faculty



A. Kruger  
Walla Walla College  
Washington State College  
*German*

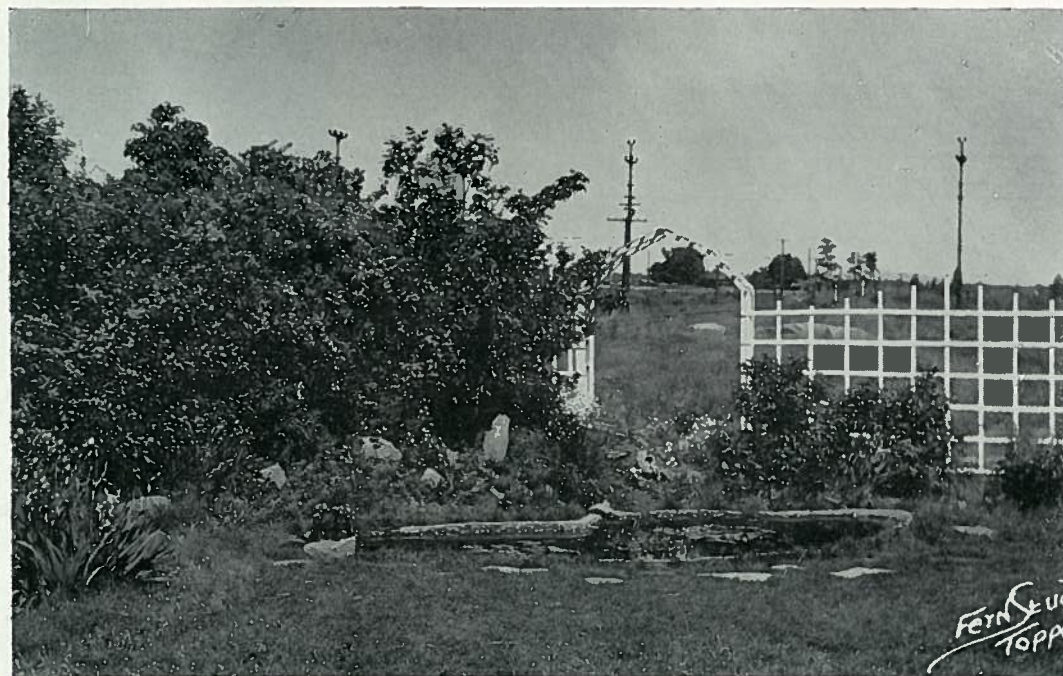


W. E. Perrin, F. L. A. A.  
Public Schools, Iowa  
International Accountants' Society,  
Michigan  
Pace and Pace, Boston and New York  
School of Accountants,  
Glasgow, Scotland  
*Bookkeeping, Accountant*

## Board Members

L. E. ESTEB,  
*Chairman*  
M. E. MULLINEX  
L. A. REYNOLDS  
C. D. HOBBS  
M. C. DEALY  
S. KIME  
F. HILTON  
M. L. MATSON  
F. W. PETERSON  
M. OSS  
O. E. SCHNEPPER,  
*Secretary*





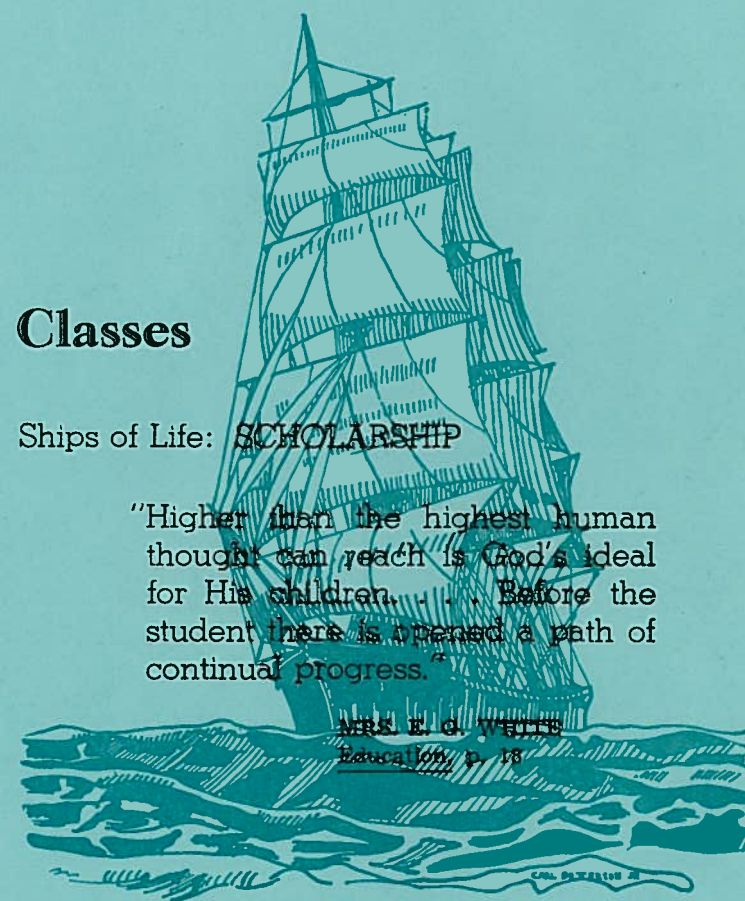
THE POOL

## Classes

Ships of Life: **SCHOLARSHIP**

"Higher than the highest human thought can reach is God's ideal for His children. . . . Before the student there is opened a path of continual progress."

MRS. E. G. WHITE  
Education, p. 18





CLASS OF 1940



MOTTO: "Tonight We Launch"

AIM: "To Anchor in Heaven"

COLORS: Blue and White

FLOWER: White Rose

CLASS OFFICERS

President.....	LA VERNE McLAIN
Vice-President.....	MARY JANE WISBEY
Treasurer .....	DONALD PETERSON
Secretary.....	EVELYN WILLIAMS
Sergeant-at-Arms.....	BERNARD SCHOEPLIN
Advisor.....	O. E. SCHNEPPER



DUDLEY CHAMBERS



DOROTHY M. TRANER

WILMA ARLEEN HALL



HENRY W. SULLIVAN

WILLIAM W. SQUIER



MURIEL F. GILBERT

ESTHER MARIE DEVOIR



WILLARD LINK

VICTOR JAUSSAUD



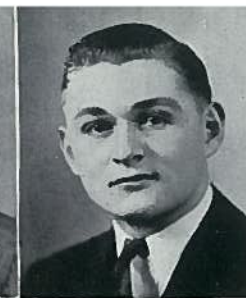
HARRIET A. DANNER

WILMA RUTH TALL



JUNE SYPHERS  
Summer Graduate

MARION V. CHRISTENSEN



WILTON D. BRESEE

FRANKLIN LESLIE ROBERTS



DELILAH KINZER

ROSALIN M. STURGES



FLOYD WESLIE ROBERTS

ANNA GRACE WEIR



JUANITA LEOTA RICHARDS

JAMES W. HUNTING



CLARA MAE MEHLING

JUNE K. LUST



ALICE MAE SMICK

FRANCES JORDAN  
No Picture



## CLASS OF 1941



### JUNIOR OFFICERS

President.....GAYLORD HOUGHTON  
 Vice President.....SYLVIA WARD  
 Sergeant-at-Arms.....LOWELL BOCK  
 Secretary.....BETTE BLACK  
 Treasurer.....MELVIN SCHWISOW

## Junior Class

Merle Knapp  
 Irene Engle  
 Wayne Adkins  
 Barbara Hampton

Merna Beerman  
 Betty Kruger  
 Bill Mehling  
 Lillian Janke

Eldon Rothrock  
 Peggy Winther  
 Phyllis Johnson  
 Glenn Rathbun

Ann Carlson  
 Waleda Grimes  
 Dudley Rockwell  
 Nellie Van Euskirk

Arthur Fund  
 Nadyne Thompson  
 Betty Young  
 Everett Janke

Evelyn Squier  
 George Randolph  
 Joyce Schultz  
 Iris Hickman

Charlotte Kiser  
 Velma Babbitt  
 Beulah Berquist  
 Merle Pierson





## SOPHOMORES



Back Row: Elmer Hart, Harold Schnepfer, Franz Siemsen, Edward Beerman,  
Alton Libby, George Rambow, Harold Matson,  
Noland St. Clair, Harvey Moore.  
Second Row: Dorothy Elliott, Gloria Smith, Anita Hatch, Virginia Lambert,  
Roberta Grove, Chloetta Lamberton.  
Front Row: Carol Hooker, Elsa Bergstrom, Howard Adkins,  
Eleanore Sittner, Violet Young.

## FRESHMEN



Back Row: Merna Beerman, Sam Mehling, Roy Hartbauer, Alvin Traner,  
Richard Bock, Barbara Backman.  
Second Row: Mary Ella Johnson, Edith Carlson, Dorothy Monroe,  
Pat Smick, Alice Sweitz.  
Front Row: Kenneth Gilbert, John Rambow, Robert Roosevelt,  
Floyd Holdbrook.

## Organizations

Ships of Life: LEADERSHIP

"And many a lad of today growing  
as did Daniel in his Judean home,  
studying God's word and His  
works and learning the lessons of  
faithful service, will yet stand in  
legislative assemblies, in halls of  
justice, or in royal courts, as wit-  
ness for the King of Kings."

MRS. E. G. WHITE  
Education, p. 262







## The Students' Association

Every student in the academy is a member of this organization and, because of the splendid cooperation, has done more for the benefit of the school than any other group of students before them.

October 27, 1939, our first campaign of the year was launched. "San Francisco" and "New York" were both racing to reach their goal. Pep and youthful vigor led to a successful close on November 28, and the installment of a heating plant in our gymnasium.

Race horses are swift and persevering and for that reason our annual staff chose "Man o' War" and "War Admiral" to be the challengers in our Pitcanook Campaign. With enthusiastic leaders and peppy sides our goals were easily reached.

School sweaters were adopted by this year's student body. Royal blue and gold with Y. V. A. monogrammed on the left side was the choice of all and now is the pride of all.

Our first school picnic was at Eshbach Park on October 17. We spent a typical picnic day with ice cream, hikes, and baseball.

Mr. Donald Peterson, with the help of his efficient staff, has done much toward making this year the best and most beneficial in scholastic and sports activities.





SUNTOSHAMU



CLUB OFFICERS  
GIRLS' PARLOR



GIRLS' ROOM



SIGMA KAPPA  
SIGMA



CLUB OFFICERS  
BOYS' PARLOR



BOYS' ROOM





## SABBATH SCHOOL

Standing:  
E. Hart  
E. Williams  
B. Schoepflin  
H. Matson  
E. Devoir  
L. McClain  
Seated:  
D. Traner  
Mrs. Nichols  
B. Randolph



## OFFICERS ICH DIEN (I Serve)

Back Row:  
D. Peterson  
Mr. Meldrum  
A. Guenther  
W. Norton  
Second Row:  
W. Sullivan  
J. Hunting  
W. Bresee  
M. Knapp  
Front Row:  
E. Hart  
L. Bock  
M. Schwisow  
A. Fund



## MISSIONARY VOLUNTEER OFFICERS

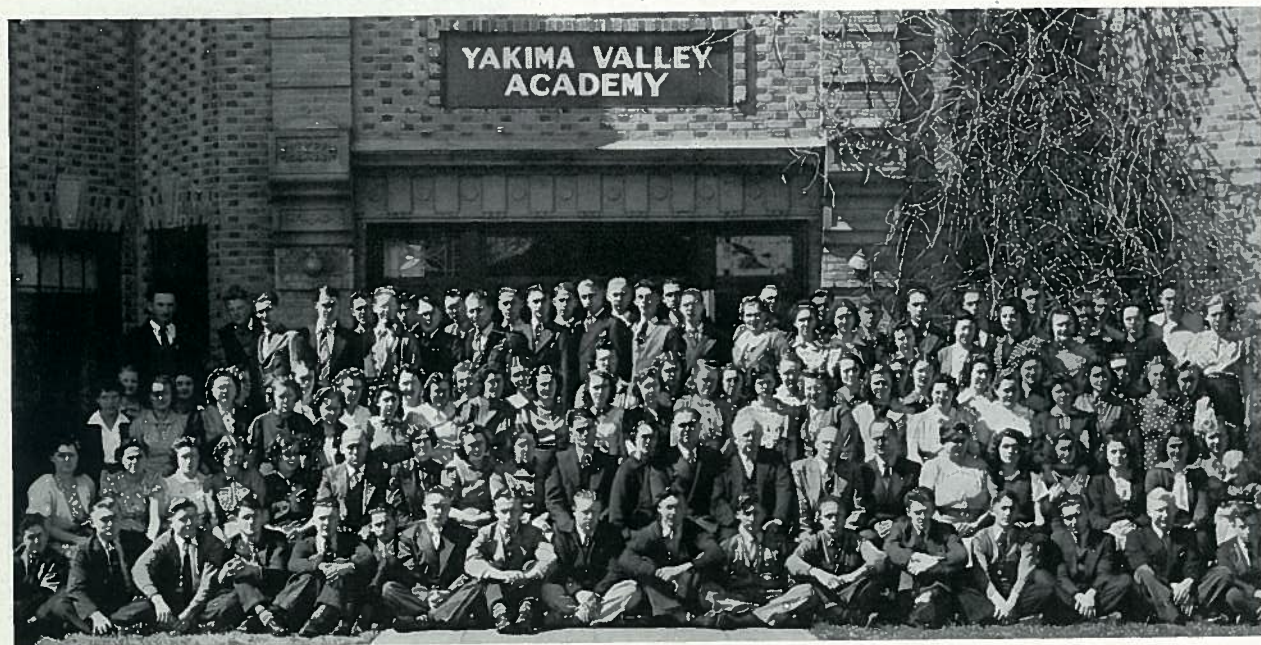
Standing:  
M. Gilbert  
Mr. Weaver  
Miss Matterand  
A. Guenther  
W. Bresee  
Seated:  
Mrs. Schnepfer  
J. Syphers  
S. Ward  
C. Lamberton

# PITCANOOK STAFF



E. Devoir Editor-in-Chief	G. Houghton Photo Mgr.	A. Wier Circulation Mgr.	W. Link Business Adviser
M. Knapp Associate Editor	B. Black Ass't Photo Mgr.	B. Kruger Typist	B. Hampton Art Editor
M. Gilbert Associate Editor	B. Schoepflin Advertising Mgr.	J. Richards Assistant Circulation Mgr.	L. Mooers Assistant Advertising Mgr.





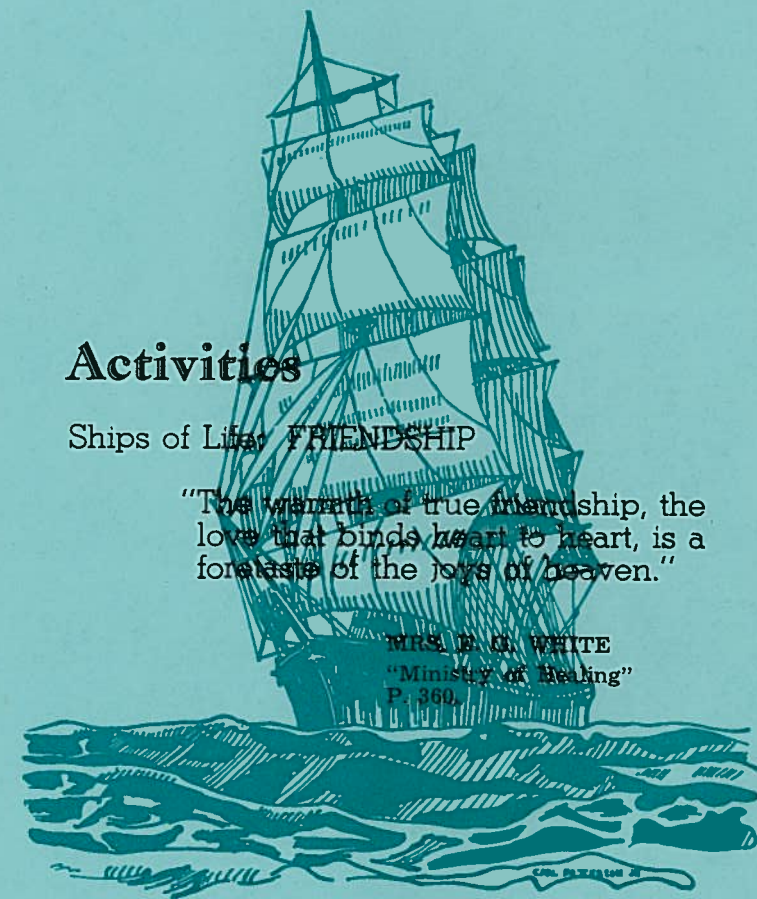
Students' Association  
1939-1940

## Activities

Ships of Life: FRIENDSHIP

"The warmth of true friendship, the love that binds heart to heart, is a foretaste of the joys of heaven."

MRS. E. G. WHITE  
"Ministry of Healing"  
P. 360.





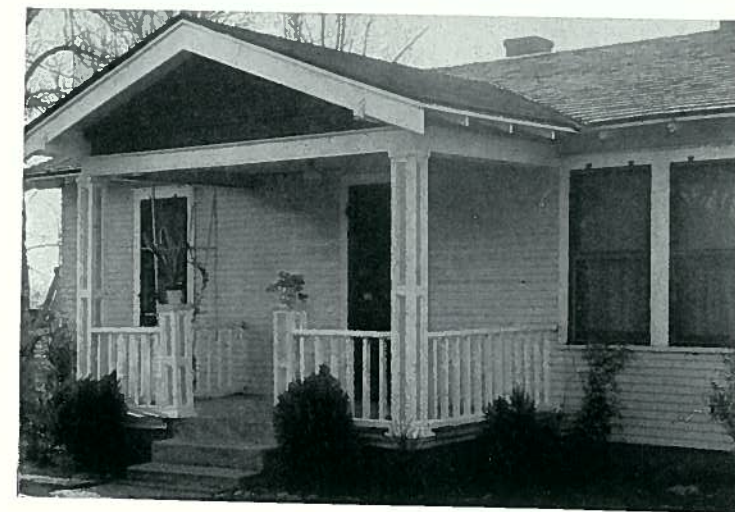
ASSEMBLY HALL



PRINCIPAL'S  
COTTAGE



PARSONAGE







### SUNTOSHAMU PROGRAM

V. Lambert, Left  
A. Franks, Right



### CAMPAIGN LEADERS

Back Row:  
M. Wisbey  
W. Bresee  
R. Sturges  
Front Row:  
D. Chambers  
V. Young  
C. Lamberton  
L. McClain



### SKATING

G. Smith  
C. Kiser  
A. Fund  
W. Roberts  
B. Hampton  
W. Hall  
G. Rambo

### OUR SCHOOL



### CHOIR



### ORCHESTRA







LAUNDRY



BAKERY



GYMNASIUM

» ROSTER «

HOWARD ADKINS  
Weston, Oregon

WAYNE ADKINS  
Weston, Oregon

VELMA BABBITT  
Route 8  
Yakima, Wash.

BARBARA BACKMAN  
Granger, Wash.

EDWARD BEERMAN  
Star Route  
Wapato, Wash.

GENEVA BEERMAN  
Star Route  
Wapato, Wash.

MERNA BEERMAN  
Star Route  
Wapato, Wash.

BEAULAH BERGQUIST  
704 Linden St.  
Pullman, Wash.

ELSA BERGSTROM  
E. 1607 7th Ave.  
Spokane, Wash.

BETTE BLACK  
115 17th Ave.  
Yakima, Wash.

LOWELL BOCK  
Route 2  
Ellensburg, Wash.

RICHARD BOCK  
Route 2  
Ellensburg, Wash.

WILTON BRESEE  
719 8th St.  
Coeur d'Alene, Idaho

AGNES BURRITT  
Granger, Wash.

ANNA CARLSON  
Freewater, Oregon

EDITH CARLSON  
Freewater, Oregon

DUDLEY CHAMBERS  
Sunnyside, Wash.

MARIAN CHRISTENSEN  
Spangle, Wash.

HARRIET DANNER  
Grangemont, Idaho

ESTHER DEVOIR  
Route 8  
Yakima, Wash.

DOROTHY ELLIOTT  
Granger, Wash.

JACK EMICK  
Route 2  
Granger, Wash.

IRENE ENGLE  
Route 5  
Spokane, Wash.

ALICE FRANKS  
Granger, Wash.

ARTHUR FUND  
Route 2  
Grandview, Wash.

KENNETH GILBERT  
Granger, Wash.

MURIEL GILBERT  
Granger, Wash.

WALEDA GRIMES  
Grandview, Wash.

ROBERTA GROVE  
Endicott, Wash.

ADOLPH GUENTHER  
Grandview, Wash.

WILMA HALL  
Tonasket, Wash.

BARBARA HAMPTON  
Malaga, Wash.

ELMER HART  
Route 5  
Moscow, Idaho

ROY HARTBAUER  
Boundary, Wash.

ANITA HATCH  
2824 N. Monroe  
Spokane, Wash.

IRIS HICKMAN  
Route 1  
Yakima, Wash.

CAROL HOOKER  
Prosser, Wash.

GAYLORD HOUGHTON  
Granger, Wash.

FLOYD HOLBROOK  
Granger, Wash.

JIM HUNTING  
Rt. 1, Box 215  
Prosser, Wash.

EVERETT JANKE  
Wapato, Wash.

LILLIAN JANKE  
Wapato, Wash.

VICTOR JAUSSAUD  
14th and Meed Ave.  
Yakima, Wash.

MARY ELLA JOHNSON  
Touchet, Wash.

PHYLLIS JOHNSON  
Opportunity, Wash.

FRANCES JORDAN  
Lamont, Wash.

DELILAH KINZER  
College Place, Wash.

CHARLOTTE KISER  
Wenatchee, Wash.

LILLIAN KNAPP  
Colville, Wash.

MERLE KNAPP  
217 N. Sixth St.  
Pasco, Wash.

BETTY KRUGER  
Granger, Wash.

VIRGINIA LAMBERT  
Ferdinand, Idaho

CHLOETTA LAMBERTON  
Brewster, Wash.

ALTON LIBBY  
Granger, Wash.

RUTH LIBBY  
Granger, Wash.

WILLARD LINK  
LaCrosse, Wash.

JUNE LUST  
Lancaster, Wash.

HAROLD MATSON  
Zillah, Wash.

LaVERNE McCLAIN  
1013 10th St.  
Clarkston, Wash.

CLARA MEHLING  
Granger, Wash.

SAM MEHLING  
Granger, Wash.

WILLIAM MEHLING  
Granger, Wash.

DOROTHY MONROE  
Wapato, Wash.

LLOYD MOOERS  
Orofino, Idaho

HARVEY MOORE  
823 Kenneth St.  
Moscow, Idaho

WILLARD NORTON  
Viola, Idaho

MERLE PIERSON  
Chewelah, Wash.

DONALD PETERSON  
Deary, Idaho

ARTHUR POOLE  
Pendleton, Oregon

GEORGE RAMBOW  
Route 1  
Walla Walla, Wash.

JOHN RAMBOW  
Route 1  
Walla Walla, Wash.

BLANCHE RANDOLPH  
Granger, Wash.

GEORGE RANDOLPH  
Granger, Wash.

GLENN RATHBUN  
503 Washington St.  
Kennewick, Wash.

JUANITA RICHARDS  
1216 McKinley Ave.  
Yakima, Wash.

LESLIE ROBERTS  
Lewiston, Idaho

WESLEY ROBERTS  
Lewiston, Idaho

DUDLEY ROCKWELL  
800 Edison Ave.  
Sunnyside, Wash.

ELDON ROTHROCK  
Malott, Wash.





## » ROSTER « Continued

HAROLD SCHNEPPER  
Granger, Wash.

BERNARD SCHOEPLIN  
Grandview, Wash.

JOYCE SCHULTZ  
Grandview, Wash.

MELVIN SCHWISOW  
Sunnyside, Wash.

EDITH SENEY  
Granger, Wash.

FRANZ SIEMSEN  
Culdesac, Idaho

ELEANORE SITTNER  
Colfax, Wash.

ALICE SMICK  
Lancaster, Wash.

PAT SMICK  
Lancaster, Wash.

GLORIA SMITH  
815 College Ave.  
Walla Walla, Wash.

BILL SQUIER  
Rt. 2, Box 44  
Salem, Oregon

EVELYN SQUIER  
Rt. 2, Box 44  
Salem, Oregon

NOLAN ST. CLAIR  
Wapato, Wash.

ROSALIN STURGES  
2002 Government Way  
Coeur d'Alene, Idaho

WAYNE SULLIVAN  
Rochford Bay, Idaho

ALICE SWEITZ  
Prosser, Wash.

JUNE SYPHERS  
College Place, Wash.

WILMA TALL  
Union, Oregon

NADYNE THOMPSON  
Granger, Wash.

DOROTHY TRANER  
Granger, Wash.

RONALD TRANER  
Granger, Wash.

NELLIE VAN BUSKIRK  
2017 W. York  
Spokane, Wash.

SYLVIA WARD  
Granger, Wash.

ANNA WEIR  
Colville, Wash.

EVELYN WILLIAMS  
805 S. 12th Ave.  
Yakima, Wash.

PEGGY WINTHER  
1834 7th Ave.  
Lewiston, Idaho

MARY JANE WISBEY  
Granger, Wash.

BETTY YOUNG  
313 Park Ave.  
Yakima, Wash.

VIOLET YOUNG  
Colville, Wash.

1. Foundation of milk
2. Prof.
3. Interesting ???
4. The weather was good too
5. Fooie
6. I thought it had a motor
7. A self made man
8. I like you too
9. Room mates
10. Fine! Five dollars
11. We work as MUCH as possible
12. Sunflower girl!
13. Just Ernie!
14. We three
15. Blondie
16. Ginger
17. And I do mean you
18. Polishing an apple
19. Smiling faces
20. Happy—slaphappy
21. The seeing eyes
22. Berta
23. That's what I said first
24. Guess
25. Meldrums
26. Barn-y twins
27. Taste good, Esther?
28. Smiles
29. Fill-us
30. Uh huh—sure
31. Follid again
32. Girls
33. Last strike
34. T'ain't the way I here'd it.





- |                                       |                     |                     |                              |
|---------------------------------------|---------------------|---------------------|------------------------------|
| 1. Ha! Ha!                            | 7. Watch the birdie | 15. Be my Valentine | 21. Cousins                  |
| 2. Ain't Tall at all                  | 8. Tish! Tish!      | 16. Berky and Wilma | 22. Homer Bock               |
| 3. Quite Katty                        | 9. Kentucky babes   | 17. Hunting Jim?    | 23. Doesn't he look ducky?   |
| 4. Music goes round and around-Music? | 10. "Peggy"-Leg     | 18. Peggy           | 24. Richie and the gold fish |
| 5. Miss Sittner                       | 11. Guess who?      | 19. Roseann         | 25. Please !!                |
| 6. Missing Link                       | 12. For Pat's sake  | 20. Who did that?   | 26. Carol                    |
|                                       | 13. Betty Co-ed     | 27. Sassy?          | 28. Featuring Mr. Cole       |
|                                       | 14. Forward never   |                     |                              |

## OUR SCHOOL SONG

Hail to thee our Al--ma

Mater To thee we pledge our love, To the Gold from the sun-light chosen To the

Cho.

Blue from the Heaven above. Heaven gave Blue, Sunlight Gold We will

be true Honor hold, Raise high the colors of our school and always by the golden.

rule, We'll shout it's praise as you've been told, Dear Y. V. A. the Blue and Gold.

Then our pride and loyalty—  
Y. V. A. We'll shout anew:—  
May our actions never tarnish  
The fame of the Gold and Blue.

Our standards high maintaining  
The honor of our school,  
Our character, too, we're building  
By this, the golden rule.

With the courage of conviction  
Comes the strength that makes us bold,  
Comes the love for truth and honor,  
Symbolized by the Blue and Gold.





- |                           |                         |                            |                             |
|---------------------------|-------------------------|----------------------------|-----------------------------|
| 1. What you got up there? | 13. Been a hunting?     | 25. Late—but not forgotten | 37. Chambers                |
| 2. Seniors!               | 14. Just Ann            | 26. Dean and Cook          | 38. More enthusiasm         |
| 3. What a mess!           | 15. Thinking?           | 27. What yu' doin' Gloria? | 39. Laundry girls           |
| 4. Beautiful scenery      | 16. Pals                | 28. Eddie and Dickie       | 40. Chicken pox—            |
| 5. Roommates              | 17. Senior Officers     | 29. We've got yu'          | 41. Christy                 |
| 6. Bet and Austy          | 18. On wheels           | 30. Monitors               | 42. Stumped?                |
| 7. Franky                 | 19. Can't it be solved? | 31. Our White Queen        | 43. Pull hard               |
| 8. Why the frown?         | 20. Hobo Bill           | 32. Deans—old and new      | 44. Dining room quartette   |
| 9. Gene                   | 21. Anita and—          | 33. Taste good?            | 45. Fishing?                |
| 10. Blondie               | 22. Capt. and Sarg.     | 34. Sully                  | 46. Barrelled               |
| 11. Lowell                | 23. On her toes         | 35. Stop! Look! Listen!    | 47. Row, Row, Row Your Boat |
| 12. Barefoot Boys         | 24. Butch               | 36. Velma                  |                             |

## UPPER COLUMBIA CONFERENCE and UPPER COLUMBIA BOOK & BIBLE HOUSE

817 West Nora Avenue  
SPOKANE, WASHINGTON



### Senior Camp

July 7-14

AT HAYDEN LAKE, IDAHO

The finest vacation that any young person can have in Upper Columbia Conference. The location is ideal for boating, swimming and hiking. You will have a real vacation that you will long remember. The program will be enjoyed from the rising signal until time for retiring.

We shall look for you among the group  
that we plan to have in attendance.

Write to Elder Melvin Oss at the Conference Office  
for further information.

**Make Reservations Early**

### SUMMER MORNINGS WITH YOUR BOOKS

Morning hours devoted to study will pleasantly occupy the mind and yield useful school credits. By using one's spare time, one can earn from three, to nine college hours or an equivalent amount of academic credit.

The Home Study Institute offers a full line of college and academic studies, accredited in all our own educational institutions, and in many others. Tuition may be paid in easy installments. Tell us of your needs at once, and let us help you get started. Our catalogue is yours for the asking.

**HOME STUDY INSTITUTE - TAKOMA PARK, WASHINGTON, D. C.**



## W. P. FULLER & CO.

PAINTS — VARNISHES — GLASS

PIONEER WHITE LEAD

LACQUERS

FULLER PAINTS . . . They Last

YAKIMA, WASHINGTON

COMPLIMENTS OF

## Grinnell Optical Company

G. B. STODDARD — C. B. STODDARD

OPTOMETRISTS

Telephone 136

224 E. YAKIMA AVENUE

YAKIMA, WASHINGTON

G. A. Beard

H. J. Adams

## Beard-Adams Seed Co.

Seed - Feed and Fertilizers

Poultry Supplies - Baby Chicks

10 S. FIRST STREET

YAKIMA, WASHINGTON

Phone 3646

107½ E. Yakima Ave.

## Careful Cleaners & Tailors

Cleaning - Pressing - Dyeing

YAKIMA

E. J. PIRO, Prop.

WASHINGTON

## WALLA WALLA COLLEGE

"The School That Educates for Life"

### COURSES OF STUDY

THEOLOGY

HOME ECONOMICS

PRE-MEDICAL

SCIENCE

LIBERAL ARTS

PRE-NURSING

PRE-DENTAL

NORMAL

BUSINESS ADMINISTRATION

MUSIC CONSERVATORY

A FULLY ACCREDITED COLLEGE

For Catalogue and Additional Information Address:

Registrar, Walla Walla College, College Place, Washington

WE SOLICIT AN OPPORTUNITY TO QUOTE ON YOUR:

REGULAR COMMERCIAL PRINTING

HIGH SCHOOL ANNUALS

PRICE BOOK SHEETS

COLOR PRINTING

CATALOGS

OUR PRICES ARE RIGHT. BEFORE YOU PLACE YOUR NEXT ORDER,  
CALL US FOR AN ESTIMATE.

## DUNHAM PRINTING CO.

10TH and EAST BURNSIDE

PORTLAND, OREGON

EAsT 1952



## YAKIMA HARDWARE CO.

"Satisfaction With Every Transaction"

TO SERVE YOU WELL SATISFIES US

DEALERS IN  
QUALITY HARDWARE — PAINTS  
SPALDING ATHLETIC EQUIPMENT  
HOME APPLIANCES — FARM NEEDS

Phone 7131

116-118 E. YAKIMA AVENUE

YAKIMA, WASHINGTON

» S. O. HAWKES «  
Watches & Diamonds

Phone 6926

105 E. Yakima Ave. Yakima, Wn.

All Around Business Training

**YAKIMA  
BUSINESS COLLEGE**

Placement Record Best in the West  
Send for Catalog and Placement List  
25 North Third St. Yakima, Wash.

**KOHL'S SHOE COMPANY**

For Better Shoes

YAKIMA

WASHINGTON

**The EMPIRE MEN'S STORE**

MEN'S CLOTHING, HATS AND  
FURNISHINGS

Peters All Leather Shoes

14 E. Yakima Avenue

YAKIMA

WASHINGTON

**INLAND STATE  
LUMBER CO.**

Lumber — Cement  
Building Materials

YAKIMA

WASHINGTON

**YAKIMA RADIATOR SHOP**

COMPLETE AUTOMOBILE  
RADIATOR SERVICE

We Clean and Repair Radiators

225 So. First St.

YAKIMA

Phone 4324

WASHINGTON

## WALTER BURNETT

STAPLE AND FANCY GROCERIES

Frozen Food Lockers

GRANGER

WASHINGTON

MEET AT

**Bell's**

WHEN NOT "CAMPUS BOUND"

GRANGER

WASHINGTON

Compliments of

**Anderson Motor Company**

Granger's Only Auto Dealer

Phone 04712

Granger, Wash.

MARTIN & WEBB'S

**I. G. A. STORE**

QUALITY GROCERIES

LYSLE WEBB, Manager

Granger, Wash.

» STOP AT «

**NICHOL'S GARAGE**

and GROCERY STORE

When Visiting the Academy

Service With a Smile

GRANGER, WASH.



Compliments of  
**Planters Hotel Coffee Shop**  
SUNNYSIDE, WASHINGTON  
**BEST FOOD IN THE VALLEY**  
Worth Driving Miles For

**Pacific Power & Light Co.**  
"Always At Your Service"

Compliments of  
**Milk Prodtcts Company**  
MAID O' CLOVER DAIRY PRODUCTS  
CARMICHAEL ICE CREAM

Sunnyside

Washington

**ROWAN'S SHOE SHOP &  
SHINE PARLOR**  
Old Shoes Made Like New  
Invisible Half Soles  
Liberty Theatre Bldg.  
SUNNYSIDE WASHINGTON

**HASKINS' VARIETY STORE**  
SCHOOL SUPPLIES  
STATIONERY NOTIONS  
TOILET GOODS CANDIES  
» HASKINS «  
SUNNYSIDE WASHINGTON

**SUNNYSIDE HIDE DEPOT**  
BUYERS  
Hides, Pelts, Furs, Wool  
Metal  
Phone 2182  
South Big Y SUNNYSIDE, WN.

**FARMERS FEED  
& FUEL CO.**  
Feed - Grain  
Wood & Coal  
Phone 1222  
SUNNYSIDE WASHINGTON

GAS - OIL - LUBRICATION - PARTS

**C. SPECK MOTORS**  
» CHEVROLET «

SOUTH SIXTH STREET Phone 651 SUNNYSIDE, WASHINGTON

**J. C. PENNEY CO., Inc.**  
"THE HOME OF VALUES"  
SUNNYSIDE, WASHINGTON

**Walla Walla Sanitarium & Hospital**

MEDICAL :: SURGICAL :: OBSTETRICAL

935 BONSELLA AVENUE

WALLA WALLA, WASHINGTON

Phone 534  
**DR. ORVILLE ROCKWELL**  
Physician and Surgeon  
800 Edison Ave. Sunnyside, Wash.

Phone 1252 Residence 1892  
**DR. MERTON A. COLBY**  
DENTIST  
Central Building  
SUNNYSIDE, WASH.

Compliments of  
» DR. McKINLAY «  
Physician & Surgeon  
GRANDVIEW WASHINGTON

S. L. J. Bldg. Phone 1904  
**H. G. BRADBURY**  
DENTIST  
SUNNYSIDE WASHINGTON



I. H. DILLS R. C. DILLS  
**WEAR ONE OF THE BIG FIVE SUITS**  
 And Save \$5.00 to \$7.50 on Your Purchase  
**\$20.00 - \$25.00 - \$29.50 - \$35.00**  
**HART, SCHAFFNER & MARX \$29.50 to \$50.00**  
**THE STAR CLOTHING CO.**  
 YAKIMA Since 1888 WASHINGTON



**YOUNG'S LUMBER CO.**  
 LUMBER - CEMENT - BUILDING MATERIALS  
 Visit Our Model Houses

YAKIMA WASHINGTON

Shaeffer, Parker & Conklin  
 Pens & Pencils  
 WHITMAN'S CANDY  
**» TUFTS DRUG CO. «**  
 Phone 5818  
 302 W. Yakima Ave. - Yakima, Wn.

**ESTABROOK PRINTING CO.**  
 PRINTING  
 Rubber Stamps  
 Phone 22552  
 122 S. Second St. YAKIMA

**» LOGAN'S «**  
**South Yakima Feed Store**  
**FEED & SEED**  
 Seed Cleaning a Specialty  
 Phone 9335 1408 South I St.

Phone 3341  
**MEDICAL DENTAL GROUP**  
 Merlin E. Mullinnex, M. D., D. N. B.  
 Donald S. Graham, D. M. D.  
 1106 W. Yakima Ave. - Yakima, Wn.

## OSCAR LUCKS COMPANY

Incorporated

**BAKERS and CONFECTIONERS EQUIPMENT  
 AND SUPPLIES**

1021 SIXTH AVENUE SOUTH

SEATTLE, WASHINGTON

Phone Eliot 7191

84 Atlantic Street

**BLAKE, MOFFITT & TOWNE**  
 PAPER

SEATTLE

WASHINGTON

**LAURA MAY-MILLER, M. D.**  
 Physician and Surgeon  
 Phone 3066  
 COLLEGE PLACE, WASHINGTON

Office: 176 Res.: 3344  
**HARLAN P. KAHLER, M. D.**  
 Physician - Surgeon  
 515 Baker Building  
 WALLA WALLA, WASH.

For That "Homemade Goodness" in

**BREAD  
 ROLLS or  
 CAKE**

Call on . . .

**ACADEMY BAKERY**

FINEST INGREDIENTS

**Butter**—Fresh from the Dairy  
**Swift's "Jewel"**—A 100% Vegetable Fat of Highest Quality  
**Sugar**—Fresh from the Local Beet Fields  
**Eggs**—Fresh daily  
**Flour**—High Grade Patents

**GRANGER, WASHINGTON**



**The  
Northwestern Natural Gas Corp.**

**USE NATURAL GAS**

**For  
Heating — Cooking — Water Heating**

**SERVING TOWNS OF  
TOPPENISH**

**ZILLAH**

**GRANGER**

Res. Phone 42

Office Phone 1633

**Fern Studio & Flower Shop**

**WE PHOTOGRAPH . . . Any Thing, Any Time, Any Place  
Cut Flowers - Plants and Floral Designs**

**TOPPENISH, WASHINGTON**

**TRIANGLE AUTO WRECKING CO.**

**Largest Stock of Used Parts in Central Washington  
Parts - Tires - Batteries - Glass - Electrical Service**

**ELLENSBURG:**

100 N. Main St.  
Phone Main 193

**YAKIMA:**

1222 So. First St.  
Phone 8383

**SUNNYSIDE:**

P. O. Box 758  
Phone 2662

Phone 119

**F. W. SHEARER, M. D.  
Physician and Surgeon  
Offices: Review Bldg.**

**TOPPENISH**

**WASHINGTON**

**WILLIAMS HARDWARE  
CO.**

**Hardware & Furniture  
BUY TODAY**

**TOPPENISH**

**WASHINGTON**

**D. H. UNSELL, M. D.  
Physician & Surgeon  
Wapato Emergency Hospital**

**X-Ray**

Phone 1793

**WAPATO, WASH.  
Office and Residence: Bower Bldg.**

**» JOHN REITH «  
M. D., M. R. C. S.**

**Physician and Surgeon**

Phone 3068

**COLLEGE PLACE - WASHINGTON**

**Once Again  
"MOLLOY - MADE Quality and Workmanship"  
Scores as the 1940 PITCANOOK Is Cased  
In a MOLLOY-MADE Cover from**

**The Babcock Cover Company**

411 East 91st Street

**LOS ANGELES, CALIF.**

**MILTON NURSERY CO.**

**A. MILLER & SON, Incorporated  
MILTON, OREGON**

**Fruit, Shade and Ornamental Trees and Shrubs,  
Peonies, Roses and Iris**

**ILLUSTRATED CATALOGUE ON REQUEST**

**Established 1878**

**325 Acres**

**V. E. ACKERMAN  
Barber**

Two Blocks from Y. V. A.

**GRANGER**

**WASHINGTON**

**ASSOCIATED GAS & OIL  
WALTER H. BUNCH**

**We Employ College  
Students**

**College Place**

**Washington**

**Building Materials, Fuel,  
Paints, Glass and Oil**

**POTLATCH YARDS, INC.**

**GRANGER**

**WASHINGTON**

**PRITCHARD'S SERVICE**

**G A S  
Oil and Repairing**

**"Service With a Smile"**

**GRANGER**

**WASHINGTON**

Res. Phone 1772-R—Office Phone 683

**HAROLD J. REITH, D. M. D.  
Dentistry**

**at**

**College Place Office Evenings  
and Sundays**

**315 Baker Bldg.**

**Walla Walla Wn.**

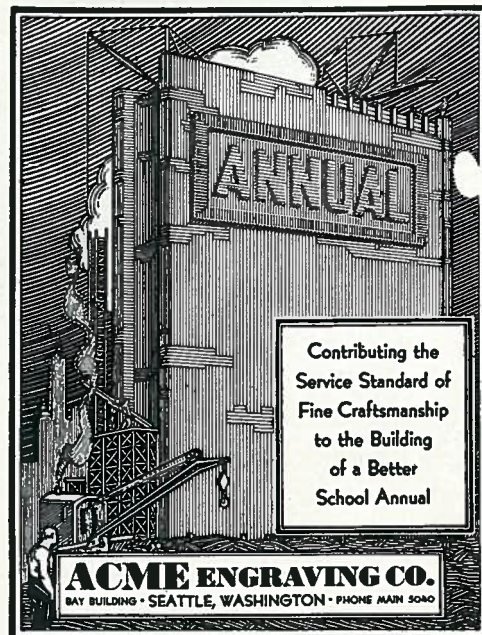
**JOHN E. POTTS, M. D.  
Physician & Surgeon**

**314 Drumheller Bldg.**

**Telephone 388**

**Walla Walla, Wn.**





## AUTOGRAPHS

# Twentieth Annual Announcement Yakima Valley Academy 1940-1941

GRANGER, WASHINGTON

FIRST SEMESTER BEGINS..... September 16, 1940  
THANKSGIVING VACATION..... November 27 Noon to December 1, 1940  
CHRISTMAS VACATION..... December 18 Noon to December 30, 1940  
SECOND SEMESTER BEGINS..... January 20, 1941  
SPRING VACATION..... March 12 Noon to March 16, 1941  
COMMENCEMENT..... May 23, 1941

## Our Faculty

O. E. SCHNEPPER, B. A.  
Principal  
Business Manager  
Bible

H. E. Weaver, B. A.  
Bible

A. Kruger, B. A.  
German

Dolores, Manfull, B. A.  
Accountant  
Bookkeeping  
Typewriting

George W. Meldrum, M. A.  
Dean of Boys  
History  
Music

Mrs. Geo. W. Meldrum, B. A.  
Piano

Mrs. Lillie Zumbaum  
Matron

Bertha Shollenburg, B. A.  
Dean of Girls  
English  
Sewing

Everett F. Coleman, B. A.  
Mathematics  
Chemistry

Mrs. Everett F. Coleman  
Registrar

Calvin Russell, B. A.  
History  
Science

V. V. Bramlett, B. A.  
Supt. of Bakery  
Baking

Mrs. O. E. Schnepfer  
Voice



## OBJECT OF SCHOOL

The object sought is the all around development of the Christian character. In order to accomplish this we endeavor to surround our students with a favorable environment. Everything is done to encourage the development of the physical, mental, and spiritual powers of each student.

## EXPENSES

A resident in the dormitory will be charged a flat rate of \$30.50 per school month. Nine dollars and fifty cents will be added to the first month to cover all fees for the year, making a total initial payment of \$40.00 for the dormitory student. A 5% discount will be allowed on tuition accounts if paid at least one semester in advance. This discount does not apply on the entrance fee of \$9.50, however.

The plan has proved to be a decided help to patrons, as well as to the school. It furnishes the school administration with money on which to operate for the first month.

The dormitory student will be asked to pay \$40.00 when he enters school, the village student, \$17.00. So far as practical purposes are concerned, that arrangement calls for advance payment for the first month and each succeeding month payable in advance.

Of the entrance fee, \$7.50 is charged for library, lecture course fees, physical education, and general expenses in registering a student in school. No refund is made on this \$7.50 even though the student leaves before the end of the year. The additional \$2.00 charged to dormitory students is for room upkeep. This is returned when the student leaves school if the room is left in proper condition and the account is settled in full.

These charges do not cover book store expenses. Books and school supplies must be paid for in cash.

Meals will be served on the American plan. As a whole, parents and students prefer this plan, for it enables them to figure in advance, with reasonable accuracy, just what the cost will be for the entire year. Besides this, there are added values in cultural, economic and dietary lines.

Students who enter school late, but make up back work and receive credit will be charged full tuition from the beginning of the year.

No reduction is made on board and room for an absence of less than two weeks.

Yakima Valley Academy attempts to operate on a cash basis, and of course, we can do this only as patrons pay promptly. This, we are glad to state has been done during the past year, with few exceptions. If students are educated to honor and pay their bills while in school they will carry with them out of school, a most valuable training in finance.

Statements are issued each month. Of course, prompt remittance is in order, but ten days are allowed for settlement, or special arrangement.

Students will not be allowed to draw money on their account, unless arrangements are made by the parents.

The charge for one or two studies will be one-half and three-fourths, respectively, of the charge for the full grade in which studies are taken. The charge for three studies is the same as full work. For five studies \$2.00 extra is charged.

Four studies are considered full work. No student will be permitted to take more than five subjects and then only by presenting a written request to the Faculty and receiving their permission.

A graduation fee of \$4.00 will be charged all seniors. This will include diploma, rental for cap and gown to be worn at all graduation exercises.

## LABOR

"Can I work my way through school?" is a question often asked. It is hardly possible by working only nine school months; but some are decidedly successful by working twelve months. Let the student make the most of his time during the summer months.

Owing to the large amount of work needed to keep our institution in order and our industries running, we can offer a certain amount of work to students who desire it. A reasonable amount of credit may be earned, depending upon the nature of the work and the manner in which it is done.

The amount paid per hour for work depends upon the dependability and efficiency of the student working. The student is observed during the month by the labor superintendent in charge of the department in which the student is working, and at the end of the month the work is graded on a basis of efficiency and dependability. There is some work which is done by contract of a certain number of hours per month. This work will also be graded at the end of each month on the same basis as the regular hour work.

If an individual has earned tuition credit and finds it impossible to attend the academy, the Board does not obligate itself to redeem such a credit in cash nor is this credit transferable except by special arrangement with the Board. If the academy in any special instance redeems such tuition in cash it shall be at a discount of not less than 50 per cent on the part of the holder of the total amount earned.

## MUSIC RATES

The monthly rates for private lessons are as follows:

Piano, one lesson a week.....\$3.00	Piano rental, one hour each day
Voice, one lesson a week..... 3.00	for a school month.....\$1.00

Music students are not allowed to drop their work during the month. Charges will be made on a monthly basis, without refunds whatsoever. Lessons missed on account of illness may be made up by special arrangements with the instructor.

Our excellent music department deserves special mention. Strong courses are offered in piano and voice. We also have an orchestra, and a large chorus. Directing classes are also formed.

## WHAT TO BRING

Each dormitory student is expected to furnish the following articles:

- |                      |                            |                            |
|----------------------|----------------------------|----------------------------|
| 1. Toilet soap       | 6. One pillow              | tains, and other articles  |
| 2. Combs and brushes | 7. Quilts and blankets     | to make a room home-       |
| 3. Four towels       | 8. Laundry bags            | like.                      |
| 4. Three sheets      | 9. Noiseless slippers      | 11. Girls are requested to |
| 5. Two pillow slips  | 10. Small rug, window cur- | bring an ironing cord.     |

## ROOM RESERVATIONS

Some students desire to have certain rooms so the following plan will be carried out in regard to room reservations:

A deposit of \$5.00 cash will be required of each one to reserve a room. This will apply on the account for the current year, and may be refunded at any time before September 16, 1940.

Students now occupying the room will have preference until June 15, 1940. The account for the previous year must be paid in full besides the deposit to reserve a room. A room not to be occupied by the same students for the following year may be



reserved by anyone whose account is paid at any time after the beginning of the second semester previous to the school year the reservation is made for.

All reservations are subject to change by those in charge of the school homes.

## THE SCHOOL HOME AND ITS REGULATIONS

Experience has shown that the purposes for which the Academy was founded are most successfully attained when the students whose parents do not reside in the neighborhood of the Academy, live in the Academy Home. Students who are altogether unable to meet the expenses of the Home, may be permitted on application to the Principal of the school, to secure approved places to work for their board. All applications for such permission, stating the reasons for the request, must be presented and approved before any such arrangements are made. Failure to comply with these requirements will justify the Faculty in declining to receive such students for classification.

It is the aim of the Faculty to provide a home where kindness and courtesy reign. These graces, together with regularity and punctuality in the home duties, are important factors in the student's education.

1. Frequent departures prevent the student's receiving the benefit which the school was established to impart. For this reason permission to be absent from school will not be given more often than once a month, unless in case of sickness or other emergency. Requests to leave over week-ends must be submitted in writing to the Principal twenty-four hours before leave is desired. Under ordinary circumstances, written statement from parents or guardians is required. Mixed groups traveling to and from school by auto must be accompanied by a competent chaperon.

2. Students wishing to leave the school grounds should first obtain permission from the proper authority.

3. Students residing in the dormitories will not be permitted, except in rare and exceptional cases, to stay over night with student friends in the village; nor will students or friends in the village frequent dormitory homes.

4. Students are expected to conduct themselves in keeping with the order and quit of a refined home.

5. Tidiness and cleanliness of person and room must be observed.

6. Noiseless slippers must be provided and worn during the evening study hour.

7. No heating, cooking, or lighting apparatus; or radios are allowed in the room, other than that provided by the management.

8. The dormitories are private homes, which should be treated as any well regulated household would expect their homes to be treated. Visiting in the dormitories is allowed only by permission of the person in charge of the home.

9. Since irregularities in eating are decidedly injurious to the health, and since regular meals are served in the dining room, it is much better that no food be taken to students' rooms except fresh fruit.

10. The kitchen, dining room, laundry, bakery, boiler room and all departments should not be made a place for loitering or visiting, as such a course militates against discipline and efficiency.

11. The use and possession of master keys and pass keys is prohibited.

12. Students will deport themselves upon the seventh day of the week, the Sabbath, in a manner in keeping with the spirit of the institution, avoiding all play and unnecessary labor. Attendance at the regular services of the Academy is required, such as Sabbath school, Sabbath preaching services, Friday evening vespers and Y. P. M. V. Those excused from any Sabbath service because of illness or any other cause are required to remain quietly in their rooms during such times of service.

13. Students are requested not to use kodaks or cameras on the Sabbath.

14. Students should have their mail sent to the Academy. The management

reserves the right to question any mail suspected of being detrimental to the best interests of the students and of the school.

15. Students having automobiles, motorcycles, or bicycles are requested to leave them at home. If they are brought to school, they are expected to be left in a garage and taken out only when permission is secured from the Principal.

16. The school will not hold itself responsible for the personal property of any student in case of damage or loss.

17. Any regulation adopted by the Board or Faculty and announced to the students shall have the same force as if in print.

## LAUNDRY SPECIFICATIONS

All garments should be marked with the full name—never initials only. Laundry ink must be used. This should be done before the student comes to school.

Students wishing to press their own clothes must furnish their own pressing cloth for the purpose. Boys are given an opportunity to press their clothes, but must furnish their own pressing cloth.

## REGULATIONS GOVERNING ALL STUDENTS

All students and teachers recognize the necessity for school rules. We aim to have as few as we can but expect these to be cheerfully and faithfully obeyed. New rules will be added only as it becomes necessary. Students soon learn that rules are laid down as guides to make it possible for a large group to get along successfully and pleasantly. Rules often look forbidding, but lived out they become natural and their necessity is readily seen.

1. Students must abstain from indecent and disorderly conduct; from profane or unbecoming language; from the use of tobacco and alcoholic drinks of all kinds; from card playing or having cards in their possession; from having or reading pernicious literature; and from improper associations. Firearms are not permitted on the school premises.

2. Students are expected to maintain a proper degree of reserve in their association with those of the opposite sex. Private correspondence, strolling together, meeting secretly together, or young gentlemen escorting young ladies on the grounds to and from gatherings, cannot be permitted, because they militate against success in school work. Proper association is a blessing to both men and young women. Experience has shown that such associations during school life are most beneficial when restricted to groups. The group plan is the one adopted by this school. Each group must be under the supervision of a member of the faculty.

3. The committee on Social Activities will provide for frequent educational programs and lectures, and occasional social gatherings or outings for all students. Attendance at social gatherings, other than such as shall be provided will be permitted only upon approval of the Faculty. Those arranging for any such gatherings must submit a request, with a list of those to be invited, to the Faculty before the regular Faculty meeting preceding, and secure a member of the Faculty as a chaperon.

4. Regular attendance at all exercises is required. Attendance at worship, chapel, library periods, etc., is required on the same basis as class attendance. All excuses for absences shall be signed by the preceptor or preceptress; parent or guardian; and approved by the Principal. Only cases of sickness and emergencies will be accepted as valid excuses for absences. A tardiness must be excused the same as an absence. Three unexcused tardinesses will be the equivalent of one absence.

5. The number of absences, excused or unexcused, must not exceed six absences from any one class during a period of six weeks, regardless of the reason. A seventh absence causes the student to forfeit his grade in the subject. The student



may, at the discretion of the faculty, be permitted to make up his work and have credit restored.

6. No student is expected to take up or to drop any class except by written permission of the Principal.

7. Each student is expected to pay for damages done by him to the property of the Academy.

### DRESS STANDARDS

"God is the author of all beauty, and only as we conform to His ideal shall we approach the standard of true beauty."—M. H. 292:3.

"It (our dress) should have the grace, the beauty, the appropriateness of natural simplicity. Christ has warned us against the pride of life, but not against its grace and natural beauty."—M. H. 288:4.

The following recommendations have been presented and adopted as rules to follow in regard to modest Christian dress.

1. Young women are required to dress in modest, simple, and healthful attire. V-shaped necks should not be cut lower than two inches below the clavicle. Sleeves should be at least half way between the shoulder and the elbow, and slits in the sleeves should not come above this point. The skirt should be of such a length that it will completely cover the knees at all times whether sitting or standing.

2. Common sense shoes are recommended. Sport shoes or oxfords, are the best type for school wear. Spike heels must not be worn.

3. Modesty requires hose to be inconspicuous. Lisle hose is recommended for school wear. The hose must cover the knee.

4. The use of rouge is discouraged. Young women are asked to abstain from the use of lipstick, eyebrow pencil and finger nail polish of deep colors as they cheapen a young woman in the opinion of refined people. Cleanliness, careful diet, regular hours of sleep, exercise at work and out-of-doors are nature's beautifiers.

5. Modesty must also be considered in the selection of wardrobe materials.

6. Jewelry, such as rings, bracelets, necklaces, or locket may not be worn.

7. Young men should not wear ordinary work clothes while attending classes, chapel, or special services or programs.

8. For all Sabbath services, classes, formal entertainments and programs, and in the dining room, a coat or a sweater, a collar, and a tie shall be worn.

### ADMISSION

As far as possible, all students interested in attending the school should apply for admission at least two weeks before the opening date. The school maintains a high Christian and social standard and those not interested in the developing of a Christian character need not apply for admission.

A student not personally known to the school administration should present a statement regarding his character, this to be signed by his former teacher, pastor, family doctor, or any well-known and responsible person.

All freshman students must bring their eighth grade certificates of graduation to present upon registering. All students coming from high schools or other academies should have transcripts sent direct from the school formerly attended, to the registrar at Yakima Valley Academy at least two weeks before the opening of school. Students coming from church schools or Junior academies should have transcripts forwarded from the Union Conference office.

It is requested that each student have such defects as eyes, teeth and throat complications corrected, before entering school.

## OUTLINE OF COURSES OF STUDIES ACADEMIC COURSE

A student may be admitted to the Academic Course upon presenting acceptable credits, showing that he has completed the work required in the first eight grades or its equivalent.

To be graduated from the Academy a student must show evidence of a good moral character.

Sixteen units as indicated in the outline below is required.

GRADE 9		GRADE 11	
Hebrew History	1 unit	Denominational History	½ unit
English I	1 unit	Social Problems	½ unit
Science I	1 unit	English III	1 unit
World History	1 unit	*Bookkeeping	1 unit
		Foreign Language I	1 unit
		*Geometry	1 unit
		*Typing	1 unit
GRADE 10		GRADE 12	
New Testament History	1 unit	Bible Doctrines	1 unit
English II	1 unit	Chemistry	1 unit
Algebra	1 unit	Foreign Language II	1 unit
Vocational	1 unit	American History and	
Sewing or Baking		Government	1 unit
*Elective			

Biology and Shorthand may be offered if there is sufficient call for these subjects.