

1926-27



Yakima Valley Academy  
Greager, Washington  
1926-1927



## TO THE YEAR-ROUND STUDENT

### EDUCATION IS PREPARATION

You don't go after an education to satisfy a whim or to be stylish. Your winters have been largely theoretical. Your summers should be practical. "Let wisdom be first. Get Wisdom." Proverb.

### BALANCE THE THEORETICAL WITH THE PRACTICAL

The colporteur's work is practical education. It also affords a means to earn a scholarship for 1926-27.

### VACATION READING?

#### M. V. Reading Courses 1926-27

##### SENIOR

"MEASURE OF A MAN"  
"STORY OF THE ADVENT MESSAGE"  
"TRAVEL TALKS ON CHINA"

##### JUNIOR

"WILFRED GRENFELL"  
"THE SPRITE"  
"PILGRIM'S PROGRESS"

"A book is a friend; a good book is a good friend. It will talk to you when you want it to talk, and will keep still when you want it to keep still—and there are not many friends who know enough to do that."

—Lyman Abbott.

WE DESIRE TO BE OF SERVICE TO YOU

## The Upper Columbia Book & Bible House

R. R. Thrasher, Secretary

B. A. Meeker, Field Secretary

817 W. Nora Ave., Spokane, Wash.

# THE SENIOR ANNUAL FOR NINETEEN TWENTY-SIX

COMBINED WITH  
SIXTH ANNUAL ANNOUNCEMENT  
OF THE  
YAKIMA VALLEY ACADEMY  
1926-27



CALENDAR YEAR

FIRST SEMESTER BEGINS, SEPT. 28, 1926

FIRST. SEMESTER ENDS, JAN. 31, 1927

SECOND SEMESTER BEGINS, FEB. 1, 1927

SECOND SEMESTER ENDS, JUNE 7, 1927

GRANGER, WASHINGTON





ADMINISTRATION BUILDING



# "Our School Song"

"THE BLUE AND GOLD"



Hail to thee our Alma Mater  
To thee we pledge our love,  
To the gold from the sunlight chosen,  
To the blue from the heavens above.

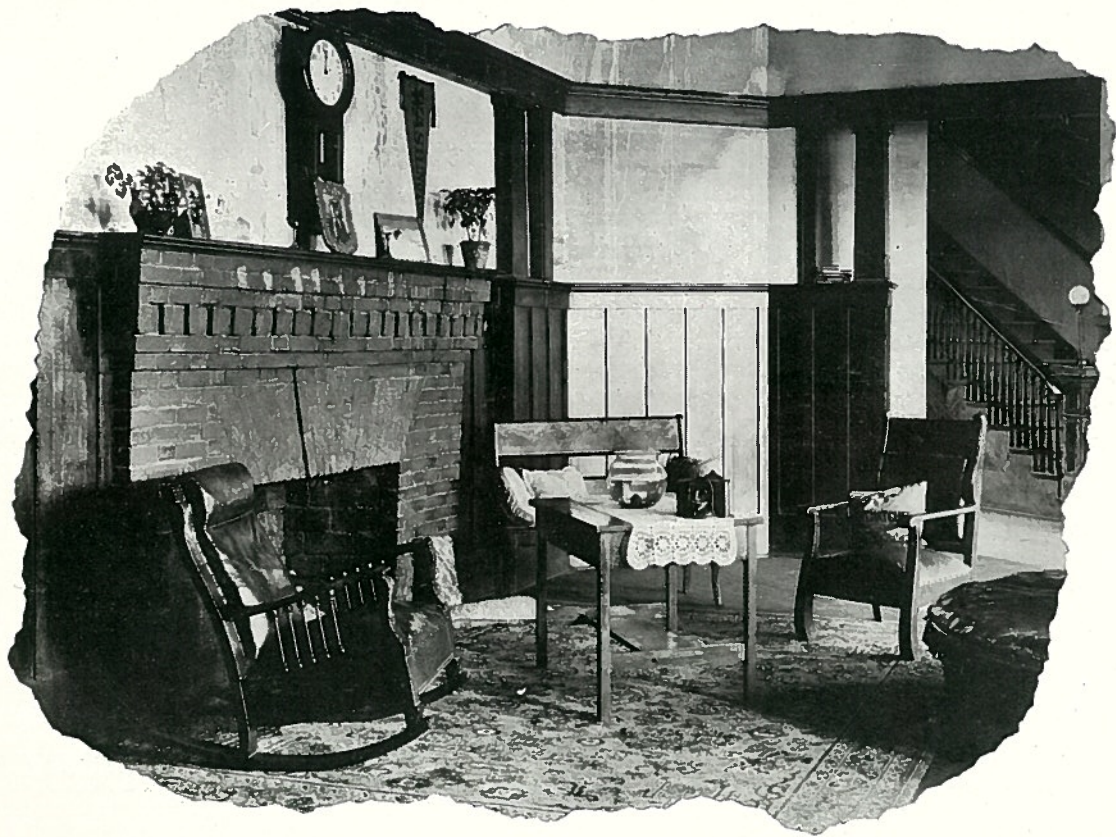
Chorus:

Heaven gave blue  
Sunlight gold,  
We will be true  
Honor hold  
Raise high the colors of our school,  
And always by the golden rule,  
We'll shout its praise  
As you've been told,  
Dear Y. V. A. the Blue and Gold

Then our pride and loyalty  
Y. V. A., we'll shout anew,  
May our actions never tarnish  
The fame of the Gold and Blue.

Our standards high maintaining  
The honor of our school,  
Our characters, too we're building  
By this the Golden Rule.

With the courage of conviction,  
Comes the strength that makes us bold;  
Comes the love for truth and honor  
Symbolized by the Blue and Gold.





## Dedication

*With all the love and respect that our young lives can bestow we most affectionately dedicate this seventh edition of the Y. V. A. annual to our Fathers and Mothers, who have stood behind us all the way, and helped us, by their toil and sacrifice to realize our ideals.*

# Yakima Valley Academy



Yakima Valley Academy is now in its sixth prosperous year and has fulfilled the need of an Academy for the young people of Upper Columbia Conference.

The town of Granger in which the Academy is situated is located in the midst of the famous irrigated district of the Yakima Valley. Two railroads pass through the town making it of easy access. The beautiful Yakima River is only a short distance from the Academy and affords swimming in the spring and skating in the winter and the groves on its banks afford ample room for picnics.

The school has five acres of rich irrigated land the greater part of which is in alfalfa furnishing feed for a small herd of grade cows.

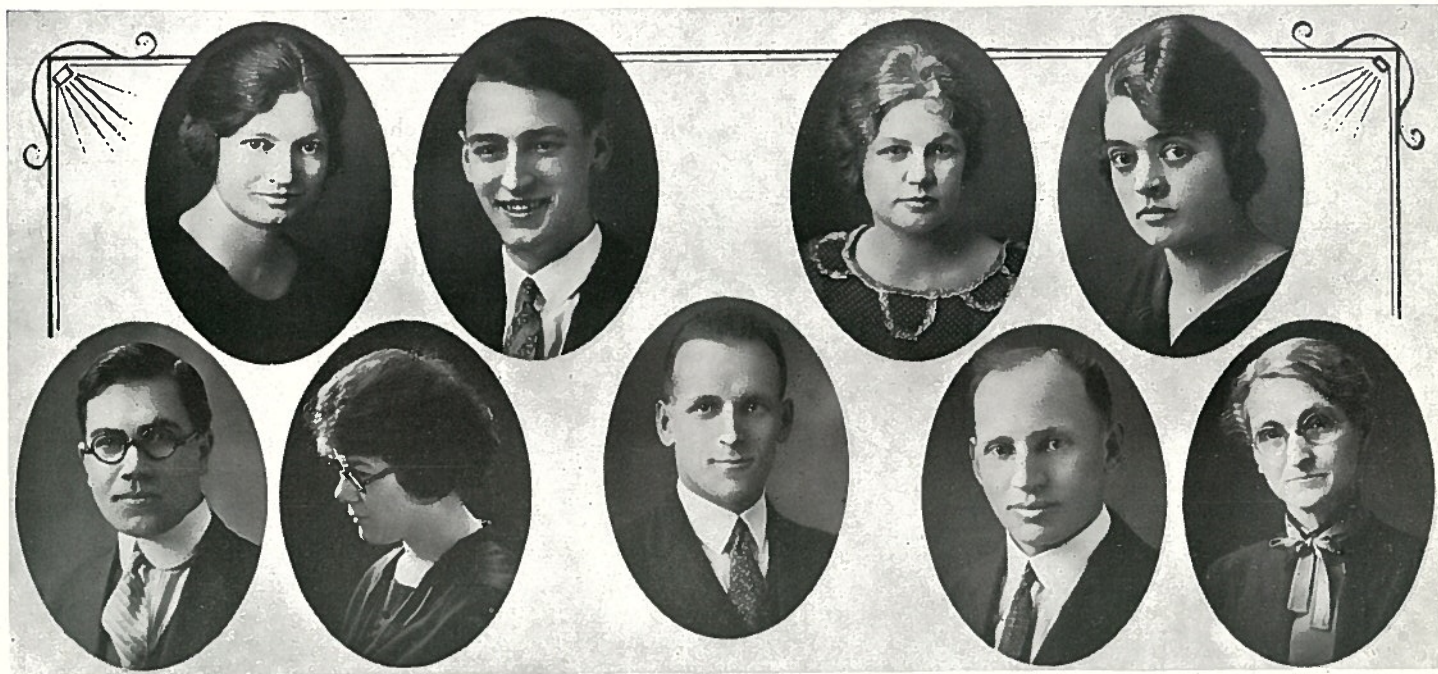
The Academy building is a three story solid brick structure having the form of a right angle. The cost of building it was \$55,000. It is steam heated, electrically lighted and most of the rooms have hot and cold water. The basement contains the large well-lighted dining room and culinary department

which includes the kitchen, deck room, milk, and fruit room. The laundry which is equipped with modern machinery is also in the basement. The first floor contains four well-lighted class rooms, library, lobby and chapel. The two thousand ninety-seven books in the library, the seats in the chapel, and Vocation Hall mentioned later are products of the enthusiasm and school spirit of the students of Y. V. A.

Besides the main school building there is Vocation Hall which contains the Sewing Room and Woodwork shop. Plans are being laid to equip the Woodwork Shop with more and better machinery. There is also a poultry building, several garages, a barn and a plumbing shop. Across the street is Assembly Hall which will accommodate four hundred people, which is used for church services and public programs.

An excellent paved highway at the edge of Granger extends from Grandview to Yakima, the latter being the metropolis of the valley.





**RALEIGH GARNER**  
Bible

**MRS. RALEIGH GARNER**  
Music

**HORACE E. WEAVER**  
Principal

**EDWARD C. REIBER**  
Woodwork

**MRS. W. F. EISENHARDT**  
Matron

**MRS. OLIVER LANGE**  
Bookkeeper

**OLIVER LANGE**  
Preceptor

**VIOLA DICK**  
Preceptress

**JOY MORRILL**  
Spanish

# Class Poem of '26

BEULAH SIRES

*Long ago, a master sculptor  
With an artists' skilful hand  
From a rude, rough piece of granite  
Made a statue, strong and grand*

*Skilfully he trimmed and polished,  
Smoothed sharp corners here and there,  
Sought to reproduce his pattern  
Worked with never tiring care.*

*Long he toiled and long he labored,  
Till this rough, unpolished stone  
Had a most artistic beauty  
That before it had not shown*

## CLASSMATES:

*Several years the master sculptor  
With our lives, yes, everyone,  
Has been shaping, moulding, chiselling,  
Yet the task is scarce begun.*

*"Tonight we launch, where shall we anchor?"  
Just toil on; be true each day,  
For Heaven our goal is set  
There we'll let our anchor lay.*

*For we must be like to the pattern  
If our lives would Him uphold,  
Never shirk those chiselling tempests  
Though they seem to us too cold.*

*For if we turn not from our goal  
Nor our efforts do not hold  
We will see more in the kingdom,  
Gathered to our Shepherd's fold.*

## SCHOOLMATES:

*Many lessons you have taught us,  
As we've studied side by side,  
And we say, as now we leave you,  
May God keep you near His side.*

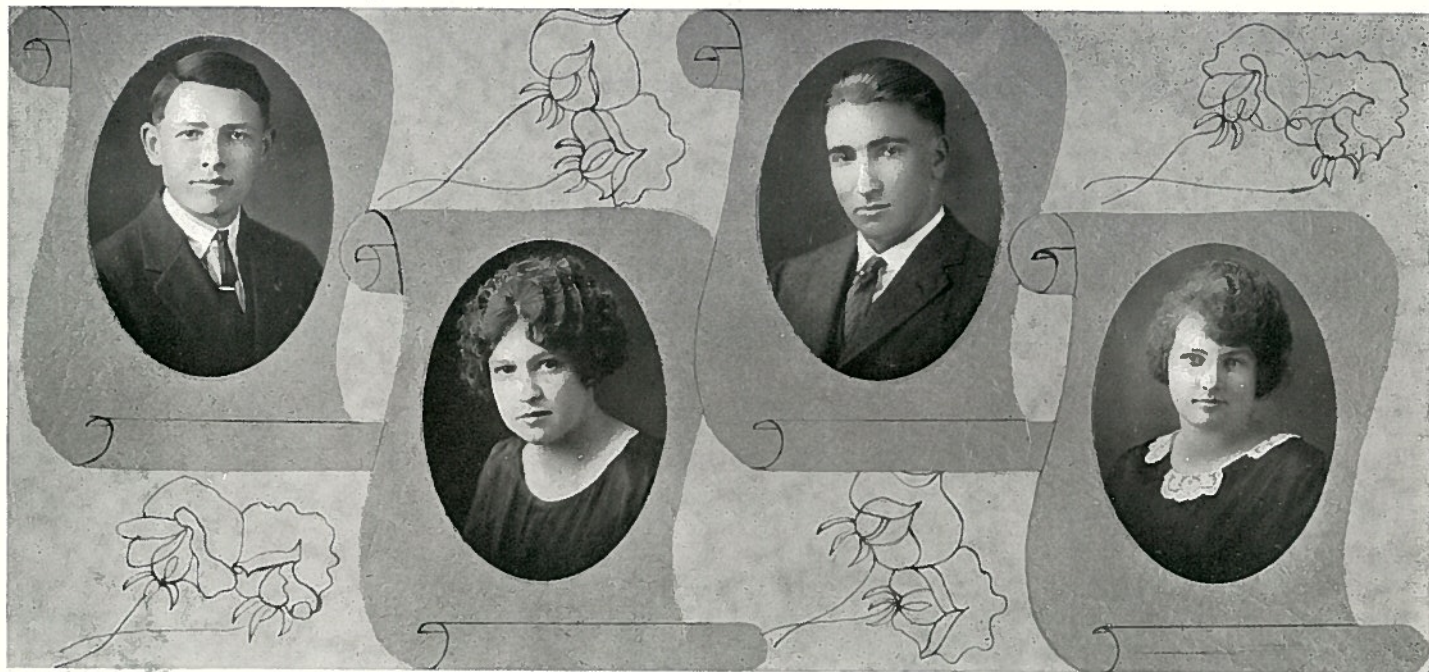
*Though from you we shall be parted  
Far away in distant lands,  
Still we never shall forget you  
And in prayer we shall clasp hands.*

*And on silent Sabbath evenings  
When the sun has gone to rest  
We'll recall the student meetings  
Which of pleasure were the best.*

*Much we owe to you, dear teachers,  
For your kind and thoughtful care,  
For by Christlike lives you taught us  
How to find our strength in prayer.*

*Though on earth we may be parted  
Never more to re-unite,  
May we meet again in Heaven  
Round God's throne so pure and white.*





**EARNEST L. PURVIS**

Earnest, loyal pursuing paths of hidden treasure.

**FAY E. GROFF**

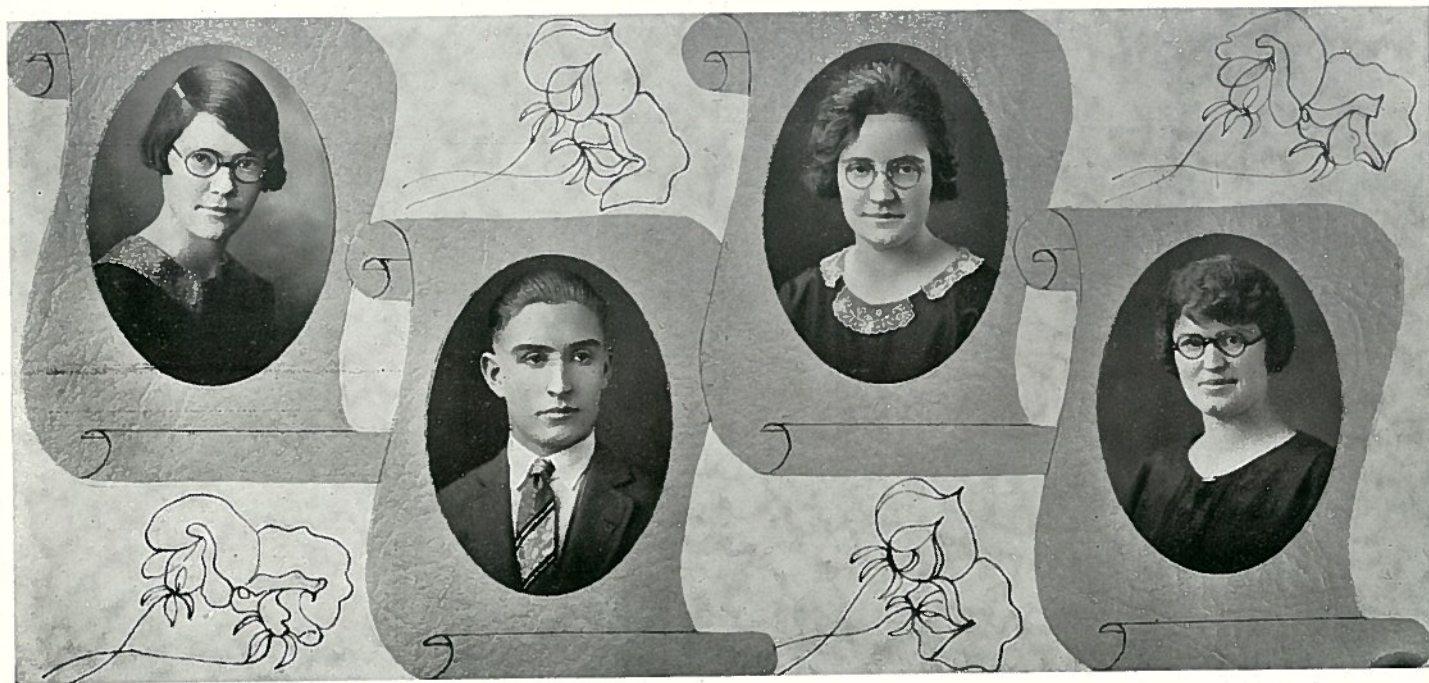
Faithful, enterprising, gentle in both word and deed.

**IVAN H. SORENSON**

Industrious, honorable, set with a firm determination to do his best.

**VERA M. BEATTY**

Valedictorian, meek, busy at home and at school.



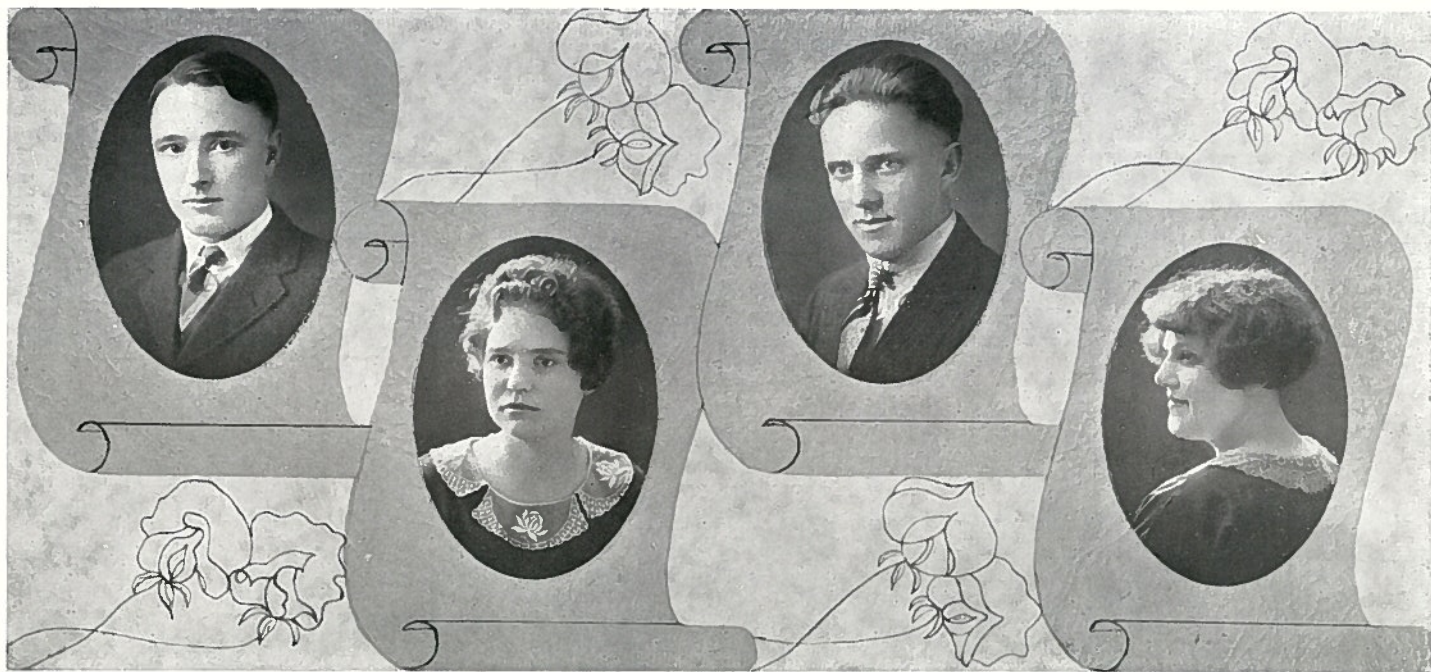
**ADA M. ATKINSON**  
Amiable, mirthful, attempting beyond her power of achievement.

**JOHN W. DAVIDSON**  
Judicious, wide-awake, dauntless in whatever he sets his hand to do.

**BEAULAH M. SIRES**  
Bonnie, modest, sympathetic toward those in need.

**STELLA P. PURVIS**  
Serious, pleasing, preparing for a life of greater service.





**FRED R. HANSON**

Firm, reserved, habitually seeking for knowledge.

**MAE PEARL OGDEN**

Merry, precise, opposed to untidiness and laziness.

**H. ARTHUR WARNER**

Honest, agreeable, willing to help anyone at any time.

**CAROL W. RENNE**

Courteous, winning, ready to do, and to dare.



JUNIORS

Yes, here are the Juniors. A class that has always been happy and smiling. You have been watching us ever since we enrolled three years ago. We have known this and it has inspired us to do our best.

If every person in the world who started to do some good thing had finished that thing, what a different place this old world would be. We are proud of our Senior friends, because they started for a good goal, and have reached it. Their example is an encouragement and a challenge to us to do our best to be worthy of taking their place. We hope that we in turn may have been an inspiration and help to the Sophomores and Freshmen, yes, and also to the Seventh and Eighth grade students.

In those things which pertain to the spiritual side of school life, the Juniors have endeavored to do their share when called upon for service. Doing such work as filling Missionary Volunteer offices, teaching Sabbath School classes, directing song services, acting as pianists, and leaders of prayer bands—all these duties and more, have been done by Juniors.

Yes, we're only Juniors, but only those who have been Juniors know the good times that memory recalls at mention of the word.

To the Juniors who are not with us this year, and to all the young people in Upper Columbia Conference who feel the need of a Christian education we extend a hearty invitation to be with us next year. We trust that those who are soon to be launching out their ships into the world's stream of activity, will give Y. V. A. serious thought. If you want to connect with the greatest work in the world, come join us, and prepare for a place in the Lord's vineyard.

We live to learn in life's hard school,

That we prepared may be

To answer quickly to the call;

Here am I, O Lord, send me.

ARBEN CARPENTER.





SOPHOMORES

What was that? Was it the Sophomores of which you were speaking? Well you may speak slightly of us, but we are a class which cannot be left out of Academic life. We are climbing, and climbing fast for we can see in the future, just two years ahead, when we will be graduating, and a fine class it will be.

We are just a jolly set now, keeping the school fires burning and making things lively. We love our dear Y. V. A. and at times we may be too ambitious or fail to get our lessons just the best, but we are learning and our hearts are with the school.

Our ambitions are great for we each have our goal set for some place in the Lord's work that when He comes He may not find us idle, but working diligently.

Well, come on, Freshies, and we'll greet you as Sophomores next year. Where there's a will there's a way and we have found the way.

YVONNE OLNEY.







FRESHMEN

There are twenty-two students in our freshman class, this being the largest class at Y. V. A. this year.

We are green, I will admit, but we know that anything green will grow and make a success of life. Therefore "Success" is our aim, and "Onward" our motto.

By this we intend to push our way through school and make use of every opportunity in the next three years at Y. V. A. to reach our aim. We know we can, and we will.

As we make this determination and follow it through until we graduate from the academy, and then finally from college, we will be assured of being sent into the work of our Master.

When we have finished His work on earth, we hope to be called to that school above which is prepared for all those who love God, and "Who are called according to His purpose."

IRENE JANKE.





7th and 8th GRADES

We in the seventh and eighth grades feel that we hold a very humble position in the academy; but these grades are the foundation upon which all the other grades rest.

When a man builds a house, if he is a wise man, he will first see that the foundation is strong, for he knows that if his foundation is weak, his whole house will be weak. Every stone that he puts into the foundation is carefully examined.

So each study in our grades represents a stone in the foundation of our future education, and though our grades are the lowest among all the other grades in the academy, they are the most important.

We are very fortunate here at Y. V. A. to have such faithful teachers not only to help us build a good foundation in our school-work, but to help us in preparing for God's work.

VERA HOWSON.





PERSONAL WORKERS' BAND

The motto of the Personal Workers' Band is "Others." There is nothing more wonderful than a life lived for others. Those who meet in this band are not only interested in their own salvation but the soul salvation of their fellow students.

Many victories have been won among the student body and many we hope for eternity. As the time of Jesus' coming is drawing nearer the students have begun to realize more that they must be personal workers for our Saviour.

Through this band the entire student body is divided into small prayer bands which go apart in quiet communion every Wednesday during the chapel time.

As we separate into our individual bands we feel the nearness of our Saviour and that we must have a closer walk with Him.

FERN GROFF.







Biology Class



Post No Biss.  
Please.



See-How  
Gays



Rooster  
Fight.



Come on in  
the water's  
Fine.



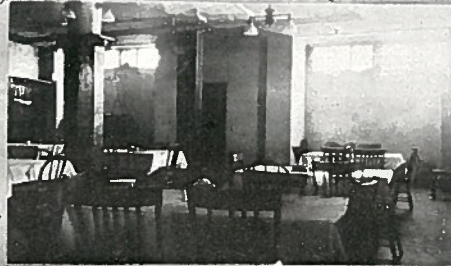
"Daddy" and Mrs. Quade  
in China



Rolling  
Around  
the World in a wheelbarrow



Caught!!!  
Fine \$1.00



Dining  
Room.



English III  
Class



Don't be afraid!



Ministerial  
Band.



Future  
Nurses



Lillian



Happy tho' Married



Our Best  
Pianist

## Ministerial Band

"God is calling for whole armies of young men . . . who have a deep love for Christ and the truth."  
—Gospel Workers.

About twenty of our young men have responded to this call and have organized into a Ministerial Band, looking forward to the ministry or some branch of God's great work.

Every Sabbath morning a meeting is devoted to the giving of short sermonettes which in turn are given at the surrounding small churches, to which a group is sent and welcomed nearly every Sabbath. We have the assurance of doing good and at the same time developing our ability to speak in public.

We are planning on a larger and better Ministerial Band next year and hope that those throughout the conference who have a desire to be in the Lord's work, will lay plans for school next fall. Come with a determination for the Lord's service so that you can share in the finishing of God's great work.

R. A. GARNER.

## Mission Bands

One of the liveliest and most interesting branches of the Missionary Volunteer Society is the Mission Bands, which meet every other Friday evening, to inspire the student body for Missionary work, here and abroad.

The bands are divided as to countries or territory, such as the Far East, Africa and South American band, each one bringing out the geographical study of the country, also the habits and customs of its people which make these meetings so interesting.

We receive letters from missionaries in these fields, which tell us of their work and the interesting happenings of the natives which give us a more vivid idea of real missionary life.

We all realize that God has a work for each of us, so we are preparing ourselves in order that we may say, "Here am I, send me," when our Master calls for reapers in His vast field or says, "Go ye also into the vineyard."

FAY GROFF.





FOREIGN MISSION BANDS



## Missionary Volunteers

Away up in the heart of the Cascade Mountains, a tiny stream starts on its long journey to the Pacific Ocean. It does not dodge the difficulties which hinder its pleasant pathway. Often it is interrupted and its course changed. Still, it presses on, ever deepening its channel and ever widening its course, until at last it reaches its goal.

So it is with our Missionary Volunteer Society here at Y. V. A. It, too, can be traced back to a very small beginning. It, too, has not always taken the most direct route to a very small beginning. It, too, has not always taken the most direct route to its chosen goal. God has directed all along its journey and it has moved steadily forward. All along the way it has added the strength of new members. It is due to the kindly cooperative interest of its members, and special blessings of

Heaven, that our society has become an irresistible force for good.

As the running water is cleansed of its impurities and made more pure, so will your life be purified, made sweeter and happier by active work in our Missionary Volunteer Society. The regular channel is one through which all the water of the little stream must pass, like-wise our society is one through which many must pass who will enter the Master's work.

Each member belongs to a band. The mission bands are interesting and educational. The literature band is one filled with rich experiences, both in correspondence work and in going from house to house with truth-filled literature.

We invite you to join us this coming year in carrying sunshine to the darkened gloomy lines of the sick, and the message we love so dearly to the homes of many who are groping in darkness about us.

ELSIE SANFORD.



## Ye Viking Association

Have you had the privilege of exposing some of your literary talent?

Have you had the privilege of testing the strength of your knees by appearing before the public?

Come!! All who have not had such a privilege, knock at the door of opportunity (Ye Viking Association) and it will be readily opened to you.

The constitution of the association reads, "All students who take an active part in the association are members." We are glad to say this year that we have a membership of 93, which includes the entire number of regular attendance in the academy at this time. A 100 per cent active student body!

We, as members of Ye Viking Association, send an invitation to every prospective student, to come and receive some of the benefits of Ye Viking Association.

Besides looking forward to an increase in the student body, and to the many hard knocks and victories, which we shall encounter in the future, we

look back also, with pride upon the many victories we have gained.

In the Laundry room we have machinery equipment, bought with money raised by the students' association.

A good library of a large number of volumes of books is also the result of the efforts put forth by the members of the association.

Two years ago there was money raised with which we put up the two-story vocation hall, where we have the woodwork and the sewing departments.

Last year we raised enough money to buy opera chairs for our chapel.

Do such victories in the past spell defeat in the future? Never! so long as Ye Viking Association is organized.

This year we aim to equip the woodwork department with better machinery, including a new turning lathe, two electric motors, a planer, etc.

Stop! Look! and Listen! Then come with all speed possible to Y. V. A., join Ye Viking Association, and be a leader.

ARTHUR WARNER, President.





## Woodwork Department

"Manual training is deserving of far more attention than it has received. Schools should be established that, in addition to the highest mental and moral culture, shall provide the best possible facilities for physical development and industrial training."—Education.

Consideration has been given this most essential training at Y.V.A. Vocation Hall with its first floor,—an equipped wood-work shop and second floor,—a sewing department, itself the result of work done by a past class in woodwork, gives evidence of that fact.

Many who leave our class-rooms may some day be found as missionaries in foreign fields with the task of making their own homes, furniture, and buildings. That is why our course includes both furniture making and a limited amount of construction work.

A turning lathe is being installed for more advanced work and plans of the Academy Board are on foot for an extension to Vocation Hall, which would include a machine room, store room and finishing room the prospects of the future of this department seem promising.

F. H.

## Sewing Department

As we cross the road from the academy toward the east, there stands a two-story building, surrounded by several large trees, known as Vocation Hall. As we go up to the door leading to the bottom floor we hear boys' voices and all sorts of sounds that have to do with woodwork but as we are not very much acquainted with such, we will go up the flight of stairs to the top floor devoted to the sewing department. Here we see at work a busy group of girls, nine of which are academic and four from the seventh and eighth grades.

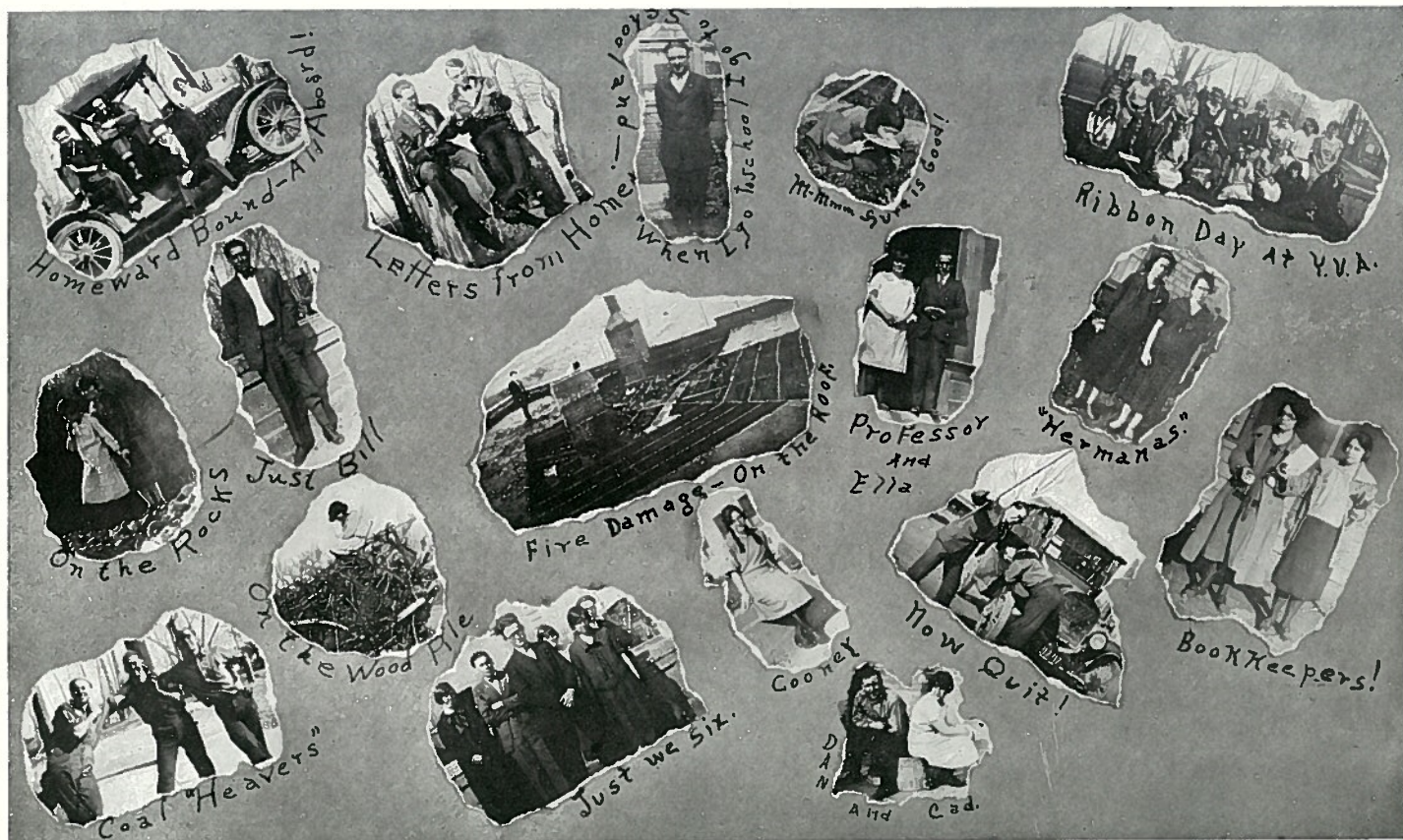
Some are doing fancy work, others are cutting at the long table in the center of the room, and four machines are heard humming.

The room has a good lighting system and is furnished with an electric iron and a large mirror.

We feel that the sewing department in our school is a great factor in developing the practical side of education.

EDITH ZOLBER.







## Music Department

It should be a source of gratification to every one who has at heart the welfare and cultivation of music to know that the demand for the best is steadily increasing. Music is one of the essential elements in our religious activities, and the best is what Y. V. A. endeavors to give. A high standard of music is being maintained by the discouraging of playing light, popular music.

This year our music department is made up of a number of piano and vocal students, eleven of which are beginners; a large chorus of fifty-five voices; a Girls' Glee Club, and a choir for the church. Besides these various activities there is also a class in sight-singing and directing. A private vocal class has been added this year and creditable work is being done.

The Girls' Glee Club gave a splendid program at Christmas time which consisted of a number of beautiful Christmas Carols. A program was rendered by both the chorus and glee club in early spring.

During the first semester any one wishing to join the chorus was welcomed. For the second semester a new plan was followed as both a boys and girls glee club were organized. The two glee clubs were combined to form a chorus.

The members of the directing class have made rapid progress due to the interest of our instructor, Mrs. Garner takes in it. They all directed for chapel the second semester.

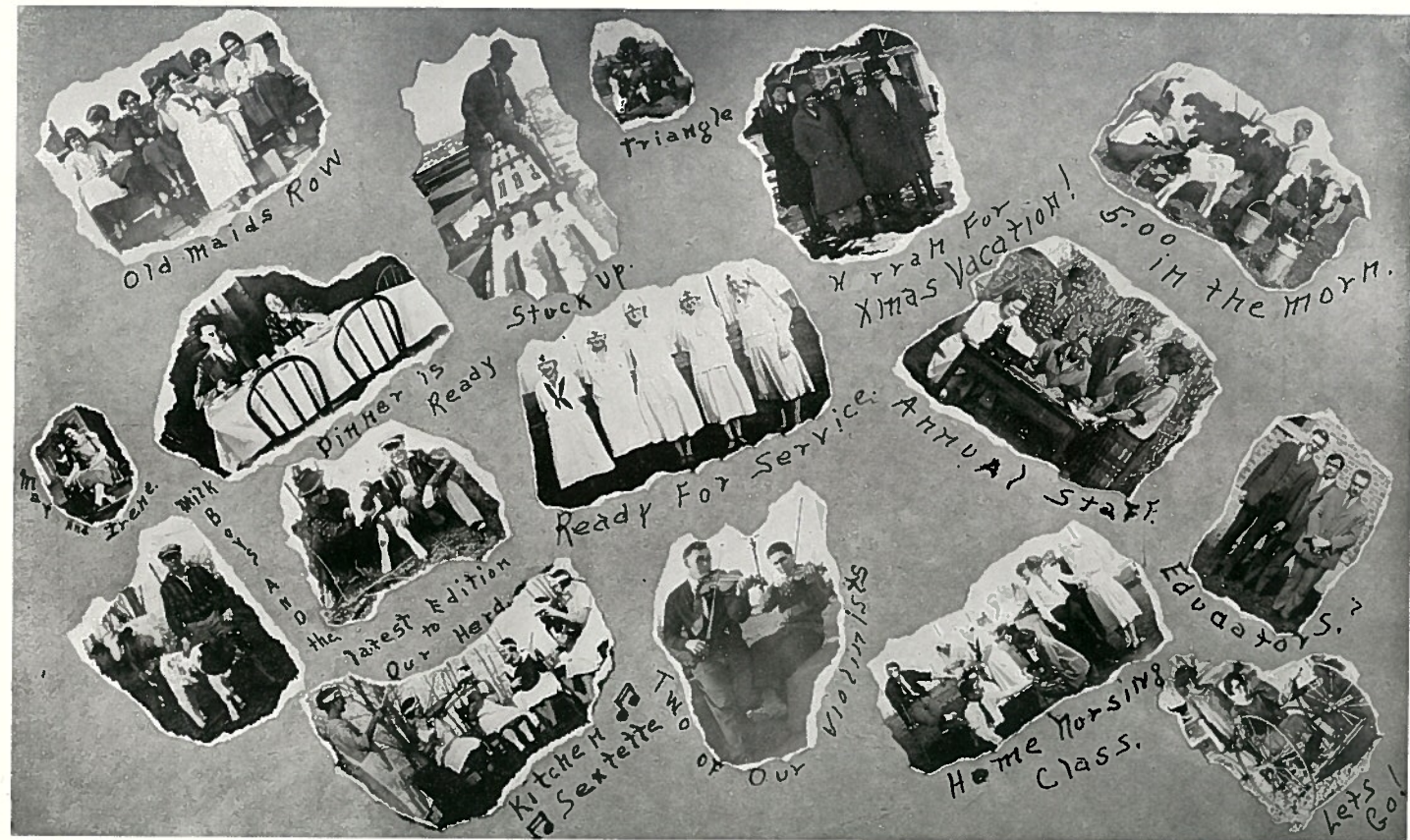
It seems that the interest and appreciation of good music is being manifested more and more each day, and we all hope that this good taste will continue to develop.

MARIE STRONG.



CHORUS







## Appreciation

The members of the Annual Staff take pleasure in issuing this Seventh Anniversary number of the Senior Annual.

We appreciate the helpful aid rendered by both the student body and the faculty in making this book possible, and it is our desire that it may prove an encouragement to a large number of young people to attend our school the coming year.

FRED HANSON.....	Editor in Chief
BEULAH SIRES.....	Associate Editor
MAE OGDEN.....	Associate Editor
JOHN DAVIDSON.....	Circulating Manager
CAROL RENNE.....	Photographer
HORACE E. WEAVER.....	Advisor

## Autographs



# Board of Trustees

Horace Weaver	E. F. Peterson	-	-	Chairman
				Manual Matson
Dr. Silas Yarnell				William Clark
	Bert Miller			Leon B. Losey
				F. W. Devereaux
	J. Riffel			R. Reese Thrasher

Chairman of the county commissioners, Yakima County.



## Faculty

\* \_\_\_\_\_, Principal, Manager.

\* \_\_\_\_\_, Preceptor,  
Agriculture.

\* ANITA THURGOOD, Preceptress,  
Librarian.

RALEIGH A. GARNER  
Bible, History.

\* To Be Supplied.

MRS. RALEIGH A. GARNER  
Music.

\* \_\_\_\_\_  
Bookkeeper, Registrar.

MISS JOY MORRILL  
Spanish, English, Sewing.

EDWARD REIBER  
7th and 8th grades.

MISS JEANETTE RICHARDSON  
Matron.

# Yakima Valley Academy

## CALENDAR

### THE PURPOSE OF THE ACADEMY

The object of the school is to train workers for the cause of God. The privileges of the Academy are not limited to Christian young people nor even to those of the Seventh-day Adventist faith. All persons of good moral character without regard to religious experience or belief are admitted to its classes on equal terms. The only requirements are that all cheerfully comply with the regulations of the school.

There is another class of students that the Academy will be glad to welcome. In many of our churches there are middle-aged men and women whose educational advantages were limited in their younger days, but who possess good natural ability and love the truth. Such could with some training, make acceptable laborers. Most excellent workers have come from this class. The faculty will take great pleasure in assisting such students to select from the course studies adapted to their needs.

### GENERAL REGULATIONS

These regulations govern all students of the Academy during the entire school year.

No student will be tolerated in the membership of the Academy who either publicly or privately seeks to disseminate immoral, infidel or atheistic ideals among his fellow students.

Any student leaving school or dropping any class during the course of the semester will be charged at full rate, unless due notice is given of such change.

Each student will be required to pay damages done by him to the property of the institution. Double amount charged if not reported within twenty-four hours. The management will not be held responsible for any unauthorized purchase by students.

Punctual attendance at all regular exercises in the school is expected. Unavoidable absences will be excused if presented in writing within the time specified by the action and advisement of the faculty.

Firearms are not necessary in schools; students must leave them at home.

Ladies and gentlemen are not allowed to associate only by permission. On no occasion will students of different sex be allowed to visit one another's rooms. Occasionally receptions are held, when teachers and students may come together for social improvement.



Gentlemen shall not escort ladies on the street, or to or from public gatherings.

All students are expected to maintain a proper degree of reserve in their association with the opposite sex. Improper associations, sentimentalism and flirtation are contrary to the usages of good society.

The school reserves the right to regulate any evils which may arise from this source and will expel students who marry during the school year.

The seventh day (Saturday) is the day observed as the Sabbath at the Academy, and proper quiet and respect will be required of all students. Engaging in sports or recreation on that day, or attending any game, is entirely out of harmony with the spirit of the institution, and will not be permitted.

Students are expected to attend regular chapel exercises on school days, Friday evening students' meeting, the Sabbath-school and general Sabbath services. Students are expected to deport themselves in such a manner as will be in harmony with the sacred character of these services.

Disorderly behavior, card playing, profane or unbecoming language, novel reading and the use of tobacco and alcoholic drinks are forbidden. Harmful literature, including books and magazines of fiction and cheap popular music will not be allowed in the home. Visiting billiard rooms, theatres, movies or gambling places or any

entertainment of an objectionable character is strictly forbidden.

The modern trend is to make the school a community center. Actual experience has shown that better cooperation, and better understanding results when both resident and home students are placed as fully as possible on the same basis. Entertainments and social gatherings will be held occasionally by the school for all the students. This will take the place of parties and local mixed gatherings.

Automobile riding by couples, day or night, will not be permitted.

Finger rings and other unnecessary jewelry will not be worn. If you bring things of this character into the school, the business manager will deposit them in the safe for you until the close of school.

A student failing to make a passing grade in two studies during the same term will be reported to the faculty for action in relation to his further connection with the school.

Students are not permitted to be in the kitchen, dining room or laundry unless employed there at the time.

Since the domestic work is part payment of the student's expenses, faithfulness is expected on the part of each, and anyone found interfering with another while at his work will be subject to discipline at the discretion of the one in charge.

Any member of the Academy family desiring to entertain guests in the Home must make previous arrangements with the preceptor or preceptress, and if it is desired to take guests to the dining room, definite arrangements must be made beforehand with the matron.

The lights will go out at 9:30 P. M., at which time all students are expected to have retired.

Any regulations passed by the faculty, and announced to the school, will be considered as effectual as those announced in the calendar.

#### DAILY PROGRAM FOR THE HOME

Rising Bell .....	6:00 A. M.
Morning Worship .....	6:30 A. M.
Breakfast .....	6:45 A. M.
Recitations .....	7:30 A. M. to 12:30 P. M.
Dinner .....	12:30 P. M.
Work and Laboratory .....	1:45 to 5:20 P. M.
Evening Worship .....	6:15 to 6:30 P. M.
Study Period .....	6:30 to 9:15 P. M.
Lights Out .....	9:30 P. M.
Domestic work as assigned.	



## The School Home

The managers of the Academy are convinced that the plan of home life adopted is of great value as an aid in the proper development of Christian character, and they earnestly recommend that all parents living at a distance, who send their children to school, make provisions for them to live at the Academy home. Those who are sent here to work for their board in private families are, by that arrangement, deprived of a large degree of the special privileges and benefits which they might otherwise enjoy. However, an opportunity to work for expenses in school is an excellent thing for one who is desiring to obtain an education, and who cannot otherwise obtain it.

Students are not allowed to board themselves, nor may they carry foods from the dining room to the dormitories, with the exception of fresh fruits.

Since the management of the school is held responsible for young people placed in their care, all unmarried young people are required to room in the school dormitory, except by special permission from the board. Youths under fourteen years of age will not be received as members of the school family except by special arrangements.

## MORNING AND EVENING WORSHIP

The home is conducted on the same principles as are all well regulated Christian homes. Family worship is maintained regularly both morning and evening for all the young people of the home. These services are under the direction of the preceptor and preceptress and much care is taken to make them beneficial to all. Satisfactory excuses are required in all cases for absences.

## HOME REGULATIONS

The following rules are a part of the regulations of this institution and all students in matriculating pledge themselves to strictly conform to them. Students must be familiar with and understand these regulations.

1. You will be held responsible for damages done to the furniture or walls of your room by marking, nails, tacks, pins, paste or glue.
2. A fine of \$1.00 will be charged to anyone found on the fire-escape. Second offense, expulsion.
3. Always extinguish your light on leaving your room even if but for a few minutes.
4. Room furnishings are not to be exchanged except by order of the preceptor or preceptress.
5. No loud, boisterous or unbecoming language is to be used in the rooms or halls at any time.
6. When wishing to study together in other than

your own room, obtain permission from the one in charge.

7. Do not throw anything out of the windows.
8. If you accept work, you are held responsible for it until excused.
9. Be regular and prompt in all your appointments.
10. Promptly report all breakages and needed repairs.
11. No candles or kerosene lamps will be allowed in the rooms.
12. Flesh meats of any kind are not served, and must not be brought into the school home. Parents are requested not to send food to their children, unless it be fresh fruit. Experience has demonstrated that food sent in by the parents produces irregularity on the part of the student, and often leads to infringement of the regulations of the school.
13. Students must obtain permission from preceptor or preceptress when desiring to leave the campus.

## WHAT ALL HOME STUDENTS SHOULD BRING

Each student in the Home should bring the following:

Scissors, thimble, needle and thread; six towels, one pillow, four pillow slips, three sheets, one bedspread, bedding for a double bed, bath robe; table cover for study 2½ by 3½ feet; toilet soap; hot water bottle; fomentation cloths; and strong laundry bag, noiseless slippers.



The student's name should be indelibly marked on every article of clothing and bedding before leaving home. The school will not be responsible for lost clothing.

No rugs, carpets or lace curtains are furnished with the rooms; students desiring these things should bring them from home. Gentlemen should be provided with suitable outdoor work clothes.

### SPECIAL INSTRUCTIONS TO YOUNG LADIES

We are judged by our style of dress. A frivolous dress marks a girl as shallow and undependable. An extravagant dress is evidence of poor taste and poor financial ability. An untidy dress curtails one's influence. A dress that is not appropriate makes one self-conscious and ill at ease. While on the other hand, a neat, clean, modest dress inspires confidence and self-respect, and is in keeping with our faith.

We have observed here as everywhere a growing tendency toward extravagance in dress. The discussions of the dress question during the past year have presented to us many problems, and we appeal to parents and guardians to help secure for our girls a good influence, by giving them the benefits of simple, harmonious and healthful dress.

We trust that the parents and guardians, also our girls, will appreciate the spirit in which these suggestions

for dress are made, and will faithfully endeavor to carry out the principles outlined in this calendar. They are given for the purpose of saving needless expense and of maintaining a high and noble standard in our school, thus fitting our young women to become noble, modest, Christian characters that God can use in the finishing of the work.

### FOR SCHOOL

A uniform dress is not required. However, we do recommend simple, one piece dresses or middy suits. Life at school is such that elaborate clothes are out of place.

Sleeves should come to the elbow, and the modern style of slitting the dress on the shoulder or upper sleeve will not be permitted. The neck of every dress when made round or square should come within an inch of the clavicle and when made "V" shape may be two inches below the clavicle.

### FOR DOMESTIC WORK

As all domestic work in the school is done by the students, an appropriate work dress is a necessity. For kitchen and laundry work a cover-all apron is advisable.

## Miscellaneous Information

### EXPENSE

The school year is divided into nine months and all charges are made on that basis. No discount on tuition and room rental is allowed for absences of less than two weeks. All accounts are payable at the beginning of each month and no deviation from this rule will be permitted without previous arrangements with the management.

We are fortunate to be situated in the midst of a fruit section. Our boys and girls are called upon to help harvest this fruit and the means earned help to pay their way through school. Over one thousand dollars were earned during the past school year.

### TUITION

The tuition for four academic subjects and one drill is \$8.25; for three subjects, \$6.50; for two subjects, \$4.75 and for one subject, \$2.75 per month. Extra drills will be 50c per month. In grades seven and eight the tuition is \$5.00 per month. The customary entrance fee of \$3.00 is made to apply toward the maintenance of the library and medical attention for short duration.

### HOME EXPENSE

Each student is charged \$5.75 for room, heat and light, and for laundry per month. On this basis it is understood that two students occupy one room and that each student be required to work ten hours a week, performing such duties as may be assigned by those in charge. A charge is made for unperformed labor. Rooms with water will be 50c per month extra.

### BOARD

Meals are furnished on the cafeteria plan at the lowest possible cost. The minimum charge will be \$10.00 per month. The minimum charge is made to protect the kitchen against loss when a student does not come to meals prepared for him. Allowances are made for sickness and absences from school. The average cost per student is \$12.00 per month or about \$3.00 per week.

Granger may be reached by two transcontinental railways, the Union Pacific System and the Northern Pacific System.

### ESTIMATED EXPENSES

	Month	School Year
Tuition .....	\$ 8.25	\$ 74.25
Room .....	5.75	51.75
Board (Estimate) .....	12.00	108.00
*Miscellaneous .....	2.00	18.00
	<hr/>	<hr/>
*Books, etc.	\$28.00	\$252.00

## TIME OF RECKONING BILL

Reduction in charges is not made for less than two week's time. If a student enters within the first two weeks of a school period, or withdraws within the last two weeks of a school period, charges are made for the entire period. However, if a student makes up back work after entering school late, full tuition will be charged.

## DISCOUNTS

A discount of 3 percent will be allowed where the expense of two students is met by one individual, and a discount of 5 per cent will be allowed on expenses for three students met by one individual. Discounts apply only on prompt payments made each period. Three per cent will be allowed when the full year's expenses are paid in advance.

## SETTLEMENT DAY

Ten days are allowed for students to send their statements home to make arrangements for payment. At the expiration of this time, in case settlement is not made, the student may be asked to discontinue his school work. Final credit will not be given until settlement is made in full.

## TUITION AND TIME OF LEAVING SCHOOL

The school cannot know that the student has left school unless he so informs its officers. Hence tuition will be charged until the student presents a drop voucher at the business office.

---

## *Regulations of the Course of Study*

### GENERAL STATEMENT

Four academic studies and one drill constitute full work. No student will be permitted to take more than full work without special permission from the faculty. Additional tuition will be charged for all extra classes, such as a vocational study or music. Grade slips will be issued every six weeks.

### ABSENCES

The student is held responsible to the Registrar for absence from any class. Each excuse must be signed by the student making the request, and countersigned by the preceptor, preceptress, parent or guardian. The excuse must be presented to principal for approval on the day following absence.



## EXAMINATIONS

Written tests and daily average of class work determine the grade for the school period. At the close of each semester all students will be required to take the semester examinations. Reports of standing are made in duplicate to the student and his parents at the close of each semester. These grade cards should be preserved for reference. A charge of \$1.00 will be made for special examinations.



"The world does not so much need men of great intellect as of noble character."—Education.



## Course of Study

"Bible study is especially needed in our schools. Students should be rooted and grounded in divine truth. Their attention should be called, not to the assertions of men, but to the Word of God. Above all other books, the Word of God must be our study. . . . And our children are to be educated in the truth found therein, irrespective of previous habits and customs. In doing this teachers and students will find the hidden treasure, the higher education."

### BIBLE

#### OLD TESTAMENT HISTORY

TWO SEMESTERS

This study covers the period from creation to the rebuilding of Jerusalem by Nehemiah. McKibbon's "Old Testament History" will be used as text. "Patriarchs and Prophets" and "Prophets and Kings" as reference books.

#### NEW TESTAMENT HISTORY

TWO SEMESTERS

This covers a careful study of the life and teachings of Christ. Kern's "New Testament History," "Desire of Ages," "Christ's Object Lessons," and the "Great Controversy" are the books used.

#### DENOMINATIONAL HISTORY

ONE SEMESTER

A comprehensive study of the rise and progress of our denomination is taken up. "Great Controversy," "Great Second Advent Movement," and "Advance Guard of Missions" will be used.

#### TESTIMONIES

ONE SEMESTER

This course covers a thorough outline study of the Spirit of Prophecy.

#### BIBLE DOCTRINES

TWO SEMESTERS

The great truths of the gospel as held and taught by the Seventh-day Adventist denomination will be studied. Work in the form of Bible readings is done by each student. Special emphasis will be placed on the books of Daniel and Revelation.

### HISTORY

"The history which the great I AM has marked out in His word, uniting link after link in the great prophetic chain, from eternity in the past to eternity in the future, tells us where we are today in the procession of ages, and what may be expected in the time to come.

"All that prophecy has foretold as coming to pass, until the present time, has been traced on the pages of history, and we may be assured that all which is yet to come will be fulfilled in its order."

#### GENERAL HISTORY

TWO SEMESTERS

The history of the leading nations of the world during ancient, mediaeval, and modern times is studied in this course. Prophetic fulfillments are noted. "Modern Times and Living Past," Elson.

#### AMERICAN HISTORY

ONE SEMESTER

American history is a study of our nation from its earliest beginning to the present day. The causes and effects of all the important events are especially noted. Fish.

#### CIVIL GOVERNMENT

ONE SEMESTER

Civil Government is a study of the origin and development of our system of local, state, and national government. "American Government," McGruder.

### ENGLISH

The English language is more universal than any other, and it is of the utmost importance that all acquire the ability to speak and write the mother tongue with ease and accuracy. The purpose of the courses in English is to help the student form correct habits of thinking, reading, writing and speaking, and to develop an appreciation for the noble thoughts and the high ideal as expressed in our extensive and varied literature.

#### ENGLISH I

TWO SEMESTERS

A thorough review of grammar, followed by the study

of the underlying principles of composition—the composition as a whole, the paragraph as a part, the sentence as a unit. Grammatical structure and the principles of punctuation are thoroughly studied, with practice in oral and written work. “English Grammar,” Kimball; “Sentence and Theme, Revised,” Ward.

#### ENGLISH II

#### TWO SEMESTERS

The first half of this year's work is a practical study of the four main types of discourse: description, narration, exposition, and argumentation. A large number of short themes and a lesser number of long ones will be required, as well as oral compositions of various kinds. The second semester will be given to a survey of the history of American literature together with a study of American prose and poetry. Note-book work is required. “History of American Literature,” Pace; “Theme Building, Revised,” Ward.

#### ENGLISH III

#### TWO SEMESTERS

The aim of this course is to give the students a broad view of English literature and cultivate a love for good reading and for the best prose and poetry. Oral reports on outside reading and note-book work will be required. “English Literature,” Long.

In connection with each course in English an average of one hour for English I, two hours for English II, and three hours for English III will be required for outside

reading. This reading may be chosen from the following lines: Missionary, travel, religious, classic.

### SPANISH

Although it is not possible to acquire fluency of speech in a two-year course, yet it is possible to study a language in the class room so that it may be easily acquired in the vernacular.

#### SPANISH I

#### TWO SEMESTERS

Fundamentals of grammar; pronunciation; composition; careful verb study; reading of easy Spanish prose. DeVitis and Worman.

#### SPANISH II

#### TWO SEMESTERS

Thorough grammar review; radical changing and irregular verbs; dictation; oral composition; reading from two or more Spanish authors. DeVitis.

### MATHEMATICS

The purpose of mathematics is to acquaint the student with the many laws and principles that govern the physical world. Habits of clear thinking and plain speech are formed, which will not only be a help to higher mathematics, but also in many other lines that demand sound and logical reasoning.

#### ALGEBRA I

#### TWO SEMESTERS

This course demands a thorough knowledge of arithmetic. The regular outline prescribed in any standard



text will be followed. The student is required to perform all fundamental operations, and solve first and second degree equations. Hawkes, Luby, and Touton.

#### PLANE GEOMETRY

TWO SEMESTERS

During this course the five books of plane geometry are studied and each proof is worked out and logically demonstrated to the class by each student. Original problems are solved and kept in a note-book. Wentworth and Smith.

#### BOOKKEEPING

ONE SEMESTER

At the beginning of this course the very simplest business transactions are introduced. Bookkeeping is largely a matter of individual practice, and students are advanced as rapidly as the subject is thoroughly mastered. Twentieth Century.

### SCIENCE

#### GENERAL SCIENCE

ONE SEMESTER

This study deals with such subjects as chemistry, physics, botany, astronomy, and zoology. The work prepares the student for a more advanced study in science. Caldwell and Eikenberry.

#### ELEMENTARY PHYSIOLOGY

ONE SEMESTER

This course gives the student not only a knowledge of

facts and principles, but helps him appreciate the wisdom and power of his Creator. Waters.

#### PRACTICAL NURSING

ONE SEMESTER

"Simple Nursing for High Schools," Pope.

### TYPEWRITING

In this course the touch method of typewriting is taught. A standard text-book is used. A fee of \$1.50 a month is charged for typewriting.

### DRILLS

All students who present themselves for graduation are required to reach and maintain an average of 85 per cent in reading, spelling, and penmanship.

### VOCATIONAL SUBJECTS

The Academy offers a course in woodwork and sewing. Ten hours of work are required each week during the entire school year, for which one credit is given. A fee of \$1.00 each semester is charged for materials. When taken as a fourth study the tuition will be the same as a regular study. When taken as a fifth study the charge will be \$1.00 per month.

### AGRICULTURE

"No other human occupation opens so wide a field for profitable and agreeable combination of labor and cultivated thought as agriculture."—Abraham Lincoln.

Our work in agriculture will be based on the text and on Government bulletins, We have hotbeds, flowers, alfalfa, poultry and dairying to experiment with. We trap-nest and pedigree our Rhode Island Reds, and hatch hundreds of baby chicks to send throughout the Northwest. We combine botany and zoology the second year with our experimental work.

## SEWING

Girls are taught in this class how to do neat handiwork. Instruction and practice are given in cutting, fitting and working on the more expensive kinds of cloth. Garments will be taken into the department and made at the discretion of the teacher in charge.

### 10 Hours per Week

#### FIRST SEMESTER

- 2 Nightgowns
- 2 Petticoats
- 2 Aprons--1 large, 1 small
- 1 Blouse or skirt

#### SECOND SEMESTER

- 2 Aprons
- Gingham Dress
- 1 Wool Dress
- 1 Blouse and Skirt
- Make over Dress
- Tailored Pockets

## Outline of Course

A student will be admitted to the academic course upon passing satisfactory examinations, or presenting accredited grades, showing that he has completed the work required in the first eight grades, or the equivalent. A grade of not less than eighty-five per cent in arithmetic is necessary for admission to algebra, and a grade of not less than eighty-five per cent in grammar for admission to English I.

Those who present themselves for graduation must have an average grade of eighty-five per cent in all subjects.

## ACADEMIC COURSE

### Ninth Grade

#### FIRST SEMESTER

- New Testament History
- English I
- Woodwork or Sewing
- General Science
- Spelling

#### SECOND SEMESTER

- New Testament History
- English I
- Woodwork or Sewing
- Physiology
- Spelling

### Tenth Grade

FIRST SEMESTER	SECOND SEMESTER
Old Testament History	Old Testament History
English II	English II
Algebra I	Algebra I
General History	General History
Penmanship	Penmanship

### Eleventh Grade

FIRST SEMESTER	SECOND SEMESTER
Denominational History	Testimonies
English III	English III
Elect Two:	Elect Two:
Spanish I	Spanish I
Geometry	Geometry
Agriculture I	Agriculture I
Drills:	Drills:
Sight-Singing	Sight-Singing
Orchestra	Orchestra
Physical Education	Physical Education

Typewriting is entitled to one unit credit when a speed of 45 words per minute is reached.

### Twelfth Grade

FIRST SEMESTER	SECOND SEMESTER
Bible Doctrines	Bible Doctrines
American History	Civil Government
Bookkeeping	Practical Nursing
Elect One:	Elect One:
Agriculture II	Agriculture II
Spanish II	Spanish II
Music	Music
Drills:	Drills:
Chorus	Chorus
Orchestra	Orchestra
Physical Education	Physical Education

### Grades One to Six

Grades one to six are being taught in the Granger church school near the Academy. The school is being conducted by the local church.

### Grades Seven and Eight

Grades seven and eight will be offered at the Academy under the supervision of the Academy faculty.



## Music Department

"The melody of praise is the atmosphere of heaven; and when heaven comes in touch with the earth, there is music and song."

Music is one of God's best gifts to man. Consecrated musical talent may be of untold value in the work of winning souls.

Our aim is to train young men and women to become Christian musicians. Music, rightly employed, is a precious gift of God designed to uplift the thoughts to high and noble themes, to inspire and elevate the soul.

### Piano

The object of the piano department is to train students to learn and appreciate good music, such as would elevate the mind. Scales, arpeggios, studies of technic, hymns, and compositions from the best composers will be given from time to time. Public recitals will be held throughout the year.

### Voice

The study of voice culture is recommended not only to those who wish to become professional singers, but also to those who wish to engage in different lines of missionary endeavor.

### Chorus

A chorus will be organized for those who have the requisite musical ability. Works from standard composers will be used. Drill credit will be given.

### Sight-Singing

A class in sight-singing will be conducted through the year, the aim being to train the pupils to read at sight, to obtain knowledge of the rudiments of music. This class is very essential to all and will be required of all music students, unless excused by showing satisfactory grades for previous work. Drill credits will be given.

### Directing

For the training of those who expect to become teachers and workers in God's cause, a class in conducting will be organized. This class will study the development of rhythm, correct methods of time-beating, hymns, and other essentials to proper conducting.

### Orchestra

The Academy Orchestra will be one of the outstanding features of the school. If you own an orchestral instrument, bring it with you and get the experience and enjoyment which the orchestra promises.

### Theory

Classes in History of Music and Harmony will be formed if there is demand for such.

## Events of the Year

### SEPTEMBER

September was nearing its closing  
Rich autumn perfumes filled the air,  
When our school its double-doors opened  
And welcomed each one ent'ring there.  
For days Y. V. A. seemed unsettled  
New students were longing for home  
While those who attended here last year  
To their favorite haunts did roam.

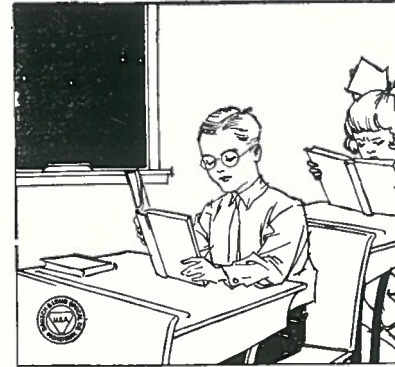
### OCTOBER

Then fall came and brought us October  
And also new students each day  
One time we were called to the chapel  
To hear the wee orphans' band play.  
The Reception too came in this month  
Where old friends and new gladly met  
And the brilliant Hallowe'en party  
With colors of orange and jet.

### NOVEMBER

November brought whispers of good things  
Thanksgiving was not far away.  
Then too we went Harvest Ingath'ring  
And gleaned for our Lord the whole day.

(Continued on page 52)



### How About Your Eyes

If your eyes hurt, itch or burn. If the print blurr and runs together, or if your head aches—

HAVE YOUR EYES EXAMINED

*The Modern Way*

**CHESTER A. JOHNSON**

*Eyesight Specialist*

210 E YAKIMA AVE.

YAKIMA, WASH.

**FOR WOMEN'S READY-TO-WEAR  
DRY GOODS, INFANTS' AND  
CHILDREN'S WEARING  
APPAREL**

You will find what you want in the  
latest styles and colorings.

**AT MODERATE PRICES, ALWAYS AT**

**Ditter Brothers**

**Yakima, Washington**



Miners of—  
**ROSLYN  
QUEEN  
LUMP COAL  
  
ROSLYN  
WASHED  
FURNACE COAL**

**ROSLYN WASHED NUT COAL**

**USE A WASHINGTON PRODUCT**

**at your local dealers.**

**OFFICE**

**301 North First Ave.**

**Yakima**

**C. D. Hessey-Agent**

**Wash:**



*CLOTHES OF MERIT*

**Wear Hart, Schaffner and Marx  
Clothes**

**TO GRADUATE IN—FOR SOCIAL  
EVENTS—OR FOR BUSINESS**

*Seen in the best of com-  
pany and always correct.*

**Priced to please you and now ready  
for your inspection**

**Let Us Advise and Help You in The  
Important Matter of Clothes**

**Traveling Bags—Wardrobe Trunks—Stylish  
Hats—New Furnishings**

**We solicit your business and strive to  
merit it with courtesy and service.**

**STAR CLOTHING CO.**

*"For Dad and the Boys"*

**Yakima at Second**

**Yakima, Wash.**

**CHICAGO CLOTHING CO.**

*"Better clothes for less money."*

**Yakima Ave. at Front St.**

**STEPHENS CLOTHES**

**CROSSETT SHOES**

**STETSON HATS**

**STEINWAY PIANOS**

—and—

*Everything in Music*

**Sherman,  Clay & Co.**

**11-So. 2ND STREET**

**YAKIMA, WASH.**



STUDENT BODY

## Student Roster

Dan Alder  
 Irene Anderson  
 Lorene Anderson  
 Merlin Anderson  
 Ada Atkinson  
 Beth Atkinson  
 Edna Beatty  
 Vera Beatty  
 Ernest Beck  
 Florence Boss  
 Otis Branson  
 Vera Brewer  
 Emma Bullis  
 Leonard Bullis  
 Robert Bullis  
 Arben Carpenter  
 Teddy Castle  
 Wreatha Cole  
 Francis Cords  
 Iris Crawford  
 Mary Crook  
 John Davidson  
 Ted Davis  
 Faye Decker  
 Willard Decker  
 Wilma Dexter  
 Ora Edwards  
 Louise Eisenhardt  
 Ransom Eisenhardt

Doris Freemire  
 Florence Fultz  
 Fay Groff  
 Fern Groff  
 Wayne Groff  
 Marie Grubbs  
 Raymond Haak  
 Joy Hahn  
 Vera Haney  
 Fred Hanson  
 Vernon Hays  
 Keith Holman  
 Logan Houser  
 Vera Howson  
 Irene Janke  
 Bernice Janshen  
 Grace Janshen  
 Velva Jones  
 Mary Judd  
 Alvin Kincaid  
 Maurice Kincaid  
 Rosamond Lamb  
 Victor Lamb  
 Ward Lamb  
 Lorin Lange  
 Jennie Larson  
 Marjorie Lewis  
 Doris Libby

Edwin Luther  
 Erma Luther  
 Lela Martin  
 James McIntosh  
 Charles McKeown  
 Lloyd Meade  
 Myrtle Milbrad  
 Esther Miller  
 Josephine Mills  
 Albert Nelson  
 Alby Ochs  
 Glen Ogden  
 Mae Ogden  
 Gretchen Olney  
 Yvonne Olney  
 Clide Omstead  
 Queenie Peck  
 Samuel Peck  
 Lynn Pester  
 Ernest Purvis  
 Stella Purvis  
 Harold Reeves  
 George Reiber  
 Theodore Reiber  
 Carol Renne  
 Richard Riddle  
 Adam Rudy  
 Alec Rudy

Fred Rutt  
 Elsie Sanford  
 Ella Savage  
 Mae Savage  
 Wilmer Schoepflin  
 Paul Sheley  
 Beulah Sires  
 Celia Sires  
 Helen Sorenson  
 Ivan Sorenson  
 Leroy Sorenson  
 Ella Standage  
 Delno St. Clair  
 Marie Strong  
 Kenneth Swall  
 Lawrence Taylor  
 Mary Tinsley  
 John Tocco  
 Iola Van Akin  
 Faye Van Allen  
 Herman Wagner  
 Arthur Warner  
 Mildred Weimer  
 Lillian Whinery  
 Elmer Wiggins  
 Everett Wiggins  
 Clyde Wilson  
 R. B. Worden  
 Edith Zolber



## Graduates

### GRADUATES 1922

Eastman, Ralph	Nord, Alpha
Fristad, Erma	Renne, Thais
Johnson, Elwin	Senecal, Clifford
Lewis, Foster	Zumwalt, Roy

### GRADUATES 1923

Field, Orson	Alcorn, Wilma
Olson, Grace	Cole, Gladys

### GRADUATES 1924

Adkinson, Elbert	Lawrence, Berwyn
Anderson, Mabel	Mackey, Stanley
Beck, Nellie	Merkel, Bertha
Crook, Wilburt	Milbrad, Genevieve
Decker, Calvin	Randolph Eldon
Edwards, Alberta	Schwartz, Leah
Edwards, Hamilton	Wiggins, Verna
Johnson, Ernest	Yaw, Louis
Klein, Floyd	Zumwalt, Enid

### GRADUATES 1925

Anderson, John	Eighme, Sabre
Anderson, Pearl	Goodall, Boyd
Aplington Kenneth	Goodall, Edna
Atkinson, Ellen	Gordon, Maude
Beck, Ruth	Marsh, Barton, Jr.
Biastock, William	Mooers, Edmond
Cable, Ila	Reardon, Herbert
Canwell, Pearl	Schwartz, Reuben
Daugherty, Frank	Shannon, Inez
Daugherty, Mable	Stewart, Glen
Devereaux, Keith	Strong, Geneva
Devereaux, Laurine	Luther, Ruby
Hardt, Eldena	

### GRADUATES 1926

Atkinson, Ada	Purvis-Wiggins, Stella
Beatty, Vera	Renne, Carol
Groff, Fay	Sires, Beulah
Hanson, Fred	Sorenson, Ivan
Ogden, Mae	Warner, Arthur
Purvis, Earnest	

## Care-free Vacation Days

When you radiate health  
and happiness—

THIS IS THE TIME FOR A  
PORTRAIT

For Old Friends and New



# Weston Studio

Phone 36

206½ E. Yakima

Yakima, Washington

## RED FRONT STORE

Yakima, Wash.

CLOTHING, SHOES, and MEN'S  
FURNISHINGS

*Low prices all the time.*

Not High Prices Now and Sales Prices Later

Before Taking That Vacation Trip Be Sure  
Your Car Has No Defective  
Parts

*We stock new and used parts*

## TURNER AUTO CO.

506-8 West Yakima Avenue

Phone 245

Yakima, Wash.

## EVENTS OF THE YEAR

(Continued from page 45)

### DECEMBER

The Ladies Glee Club gave a program  
When Christmas began to draw near;  
And then came the jolly vacation  
When only five students were here.

### JANUARY

One calm Friday night of the new year  
As all were just going to bed  
There rang a cry, "Fire!" through the darkness  
Scared girls saw the flames, shook and fled.  
This month marked the night of the "Bean feed"  
From the boys—'twas sure a grand treat.  
And "exams." for the whole semester  
Which some met with fast chilling feet.

### FEBRUARY

The College and English III programs  
In February were given  
The staff began working in earnest,  
Its task not to leave in oblivion.

### MARCH

March breezes brought odors of springtime  
And so did the chorus' songs.  
We waited weeks for the boys' program.  
But praise to its merits belongs.

(Continued on page 56)

## Twin Thompson Bakeries Inc.

We paid \$70.00 for one loaf of Bread in  
order to give you a home made loaf—and  
we have it.

Ask for  
Mrs. Nelson's Home Made Bread

*The Prize Winning Loaf*

DEMAND IT AT YOUR GROCERS

10 cents per loaf

**TWIN THOMPSON BAKERIES INC.**



## ECONOMY SHOE STORE

*Quality Shoes*

at

*Popular Prices*

17 E. Yakima Ave.

Yakima, Wash.

## AMUNDSON HARDWARE

Sunnyside, Wash.

Hardware and Machinery

A Good Place To Trade

## THE KANDY KETTLE

Our Own Make Only

and

Always Fresh

Prices

25 to 75 cents per pound

25 W. Yakima Ave.

Yakima, Wash.



## SHAW-HUSTON CO.

FUNERAL DIRECTORS

108 N. Second Street  
YAKIMA, WASHINGTON

Chickering Pianos

Gulbranson Pianos

## TALCOTT MUSIC HOUSE

*Sixteen Years of Harmony*  
YAKIMA, WASHINGTON

New Orthophonic  
Victrolas, Records

Fada Radios  
Zenith Radiola

## SUNNYSIDE SHEET METAL WORKS

ZENITH FURNACES—MILWAUKEE  
AIR PUMPS  
PLUMBING and HEATING

Sunnyside F. E. Lacy, Prop. Washington

# Granger Hardware Co.

HARDWARE  
PAINTS OILS GLASS  
FURNITURE

We respectfully solicit your patronage.

Claude Brumbaugh Prop.  
Granger, Washington

THE  
HOME OF

AnSCO  
and Eastman  
Cameras  
and Kodaks

\$1.00 to \$20.00

Bells Pharmacy  
Granger, Washington



## EVENTS OF THE YEAR

(Continued from page 52)

### APRIL

In April we had three good programs  
The "Girls" and the "Ye Viking" too.  
The Glee Club from over at College  
Awakened our int'rest anew.

### MAY

The Nazarene giv'n by the chorus,  
The boys' entertainment right gay,  
The Baccalaureate sermon, and Class Night,  
Commencement, all offered in May.  
Our final "Good-byes" at last worded  
Reluctant we left Y. V. A.

—Doris Libby.

I. O. Storaasli

N. J. Carpentier

## STORAASLI-CARPENTIER

"Just Good Clothes"

Our New Location—3d Yakima Ave. East

Phone 467

Yakima, Washington

The Best Place to Buy

RADIO

PIANOS

RECORDS

SHEET MUSIC

## LeMay's Music Shop

Phone 1195

112 E. Yakima Ave.

Yakima, Wash.

## Valley Pharmacy

Jas. L. Barr

*Let us fill your prescriptions  
and dispense your drugs.*

Phone 225

210 E. Yakima Ave.

Yakima, Wash.

## **Hotel Commercial**

*The First Class Hotel Of  
Yakima, Wash.*

### **Modern in Equipment**

*All Rooms With Tub and Shower Bath  
Modern Sample Rooms                      Golf Course*

*First Class Dining Room  
Private Banquet Room*

### **The Commercial**

*Is a Real Standard Hotel in Appointments  
And Efficient Service to Its Patrons*

**Clinton A. Harrison, Mgr.**

MRS. MUSA BRODIE  
Traveling Representative

## **SHUPE AUTO BODY WORKS**

Plate Glass For All Cars

we specialize in

AUTO BODIES — WHEELS — FENDERS

BODIES BUILT TO ORDER

For Wrecked Cars Bent Fenders and Squeaky Wheels

Phone 2957

128 So. First Street

Yakima, Wash.

## **Lentz Hardware Company**

Retail-Wholesale

224-226 West Yakima Ave.

Yakima

Washington

# HARDWARE

I. H. C. Farm Implements  
Bean Power Sprayers  
Dodge Brothers Motor Cars  
Graham Brothers Trucks  
Goodyear Tires and Tubes  
Accessories

At Your Service  
With Best of Service

**Bell-Wyman Company**

Phone 25

102-8 So. 1st Street      Yakima, Washington

# Auto Equipment Company

Replacement Parts and Accessories

Ring Gears & Pinions  
Axles & Drive Shafts  
Motor Bearings  
Valves

Silent Timing Gears  
Piston Pins and Rings  
Clutch Facing  
Universal Joints Discs  
Cylinder Headquarters  
Genuine Ford Parts

206 W. Yakima Ave.

Yakima, Wash.



Ladies Apparel

Dry Goods

**P. M. HOLCOMB, Inc.**

*We Say It With Values*

Phone 1234

Sunnyside, Wash.

Office Phone 2273

Res Phone 2642

**JEFF DAVIS**

**General Auctioneering**

*Satisfaction Guaranteed*

Toppenish

Washington

**J. C. BREWER**

**Shoe and Harness Shop**

Your Patronage is Appreciated

Zillah

Washington

**JACK THOMAS—BARBER**

Shingling and Bobbing  
A Speciality

Granger

Washington

**DR. J. A. BLINE**

Eye, Ear, Nose and Throat

Glasses Fitted

YAKIMA

**DR. W. C. KETCHUM**

**Dentist**

PHONES

Res. 3129 Office 117

Offices, 226 Miller Bldg.

**DR. J. H. SCHUTZ**

PHYSICIAN & SURGEON

Phone 724

Sunnyside, Wash.

—X-RAY EQUIPMENT—

**DR. L. CHRISTOPHERSON**

**Dentist**

424 Miller Building

PHONE 2868

YAKIMA, WASHINGTON

Drs. Bloxham & Hughes  
Osteopathic Physicians & Surgeons  
Oculist

SUNNYSIDE

WASHINGTON

**BRADBURY'S**  
**IN CENTRAL BUILDING**  
Again Solicits Your  
**KODAK FINISHING AND DEVELOPING**

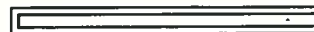
Mail Orders Given Prompt Attention  
Every Print Guaranteed

YAKIMA

WASHINGTON

## Depend On It

That the Chas. H. Barnes Shop is Fashion  
Headquarters for Spring Style—Smart—  
Authentic and Correct.



*Style Advisers for Yakima's*  
*Smartly Dressed Women*

**Chas. H. Barnes Shop**  
MASONIC TEMPLE

Always Reliable

Always Reliable

## Walen's Shoe Shop

The Home of Good Shoes For  
Men and Boys

Goodyear Welt Shoe Repair System. Best  
of Materials Used. All Work Guaranteed.  
Mail Your Shoes to Us for Repairs. Return  
Postage Paid by Us.

### WALEN'S SHOE SHOP

15 S. First

Phone 203

# S E E D S

---

## Lilly's

### YAKIMA SEED CO.

14 South 1st Street

Yakima, Wash.

Distributor

LILLY'S PRODUCTS

---

# S E E D S



**WE CARRY:—**

A complete line of Hardware, Tools,  
Paints, Universal Ranges, Estate Heatrolas,  
Seeds, Guns, Ammunition, Fishing Tackle,  
and Spaulding Athletic Goods and we will  
appreciate serving you in a quick and  
courteous manner.



**Locke Hardware Co.**  
Yakima Washington

# Valley Gold Butter



**Ice Cream and Butter  
Of Superior Quality**



**YAKIMA DAIRYMEN'S ASSOCIATION**

**509-11 W. Yakima Ave.**

## SHOWING THE MOST APPROVED STYLES IN WEARING APPAREL

Also a large variety of the  
most appropriate accessories  
so essential to the better  
dressed woman.

**M**ATERIALS OF THE NEWEST WEAVES AND NEW-  
EST COLORS ALWAYS IN LARGE ASSORTMENTS

PRICES ATTRACTIVELY LOW

### CALLAHAN CO.

Yakima, Washington

## A COMPLETE LINE FOR THE POWER FARMER INCLUDING

The Cletrac Tractors

Lindeman Extension Tractor Discs

Lindeman Disc Ditchers

Lindeman Tractor Trailers

Killefer Subsoilers

Iron Age Potato Planters and Diggers

### Lindeman Power Equipment Co.

Yakima

Washington

**J.C. Penney Co.**  
A NATION-WIDE INSTITUTION -  
 DEPARTMENT STORES

TOPPENISH, WASHINGTON

**YOU WHO SHOP HERE  
 HAVE OUR PLEDGE**

There is no occasion to haggle here over price or quality. We have but one price—that fixed upon a fair margin of profit over the producer's price to us—and that price alone is for all alike. There is no deviation.

Your dollar will go as far as your neighbor's here—no farther.

Only goods of strictly reliable quality are presented. "Seconds," "job lots," "bankrupt stocks" and other undesirable goods are not permitted in this store.

You have our pledge of satisfaction.

**E. M. CONDON & CO.**  
 General Merchandise

INDIAN BLANKETS    NAVAJO RUGS  
 BASKETS    BEAD WORK

Toppenish

Washington

Follow the Crowds

DANDY  
 STORE

**BAKER'S**

THE  
 LIVE  
 WIRE  
 STORE

**Most Everything**

Yakima, Wash.

**EVERYTHING FOR EVERYBODY**

*If we haven't it, we will try to get it for you*

**The Little Store with the Big Business**

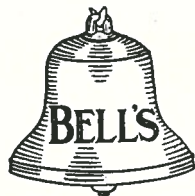
## A. P. PETERSON & CO.

General Merchandise



Granger

Washington



At Your Service

**BELL'S CAFETERIA**



YOUR APPEARANCE  
FROM THE ANKLES  
DOWN

Your appearance and disposition depend to a great extent upon shoes that you choose.

**CENTRAL  
SHOE STORE**

"Shoes That Satisfy"

222 E. Yak. Ave. YAKIMA

## Florence Flower Shop

CUT FLOWERS

FLORAL DESIGNS

POTTED PLANTS AND SHRUBS

Phone Orders

Given Careful Attention

Phone 259

324 E. Yakima Ave.

Yakima, Wash.



## **Remember:-**

**When in Yakima  
K. & W. Service  
GAS—OILS—TIRES**

### **KISER AUTO REPAIR**

We can repair your battery, wash and polish your car, weld your fenders, overhaul your motor, and make you leave happy.

**Cor. 7th and West Yakima Avenues**

**W. A. Kiser --- R. E. Wolgamott**

**Proprietors**

## **A. B. Fossean & Co.**

**Building  
and Irrigation Supplies**

**COAL, PAINT**

**SPRAY MATERIAL**

**Phone 13**

**101 W. Yakima Ave.**

**Yakima, Washington**

## **YAKIMA ART CO.**

**PICTURES AND PICTURE FRAMING  
PAINTING AND DECORATING**

**C. T. McMulloch**

**Phone 427**

**14 S. 2nd St.**

GRANDVIEW BREAD  
Wins its FAVOR through its FLAVOR  
REAL HOME MADE BREAD

We have supplied the Academy for four years---No better recommend have we to offer

SOLD IN ALL TOWNS IN THE VALLEY

ASK FOR SOANES' BREAD

YOUR PATRONAGE SOLICITED

S. A. SOANES

# DR. PAUL BENOIT

**Dentist**

320 MILLER BLDG.  
YAKIMA, WASH.



POPULAR WITH ACADEMY  
STUDENTS



*Appointments made Saturday nights.*

You will

receive courteous

and generous treatment

by patronizing the firms

advertising in this Annual.

*Let Us Do Your*  
**Job Printing**

First Class Work  
Reasonable Prices

*Estimates  
Cheerfully Furnished  
Upon Request*

Don't pay exorbitant  
prices for Printing  
**We Do It For Less**

*The*  
**COLLEGE PRESS**

*A Department  
of Walla Walla College*



COMMERCIAL JOB PRINTING  
PRINTERS FOR PUBLISHERS

*Our Business  
is  
to Print*

Every job of Printing  
is supervised by skill-  
ed employees, and  
entire satisfaction is  
guaranteed. ∴ ∴ ∴

*A Trial Order Will  
Convince*

ORDERS FILLED  
WITHIN TEN DAYS



## THE STATE OF YOUR MIND

"Think big and your deeds will grow,  
Think small and you will fall behind;  
Think that you can and will—  
It's all in the state of mind.

If you think you're outclassed you are;  
You've got to think high to rise,  
You've got to be sure of yourself before  
You can ever win a prize.

Life's battles don't always go  
To the stronger or the faster man,  
But soon or late the man who wins  
Is the fellow who thinks he can."

Think right, build a home;  
Go right, go to Tum-A-Lum.

**Tum-A-Lum Lumber Company**  
**Home Builders**

## C. J. NORTON

CASH BUYER

CREAM, EGGS, VEAL  
and POULTRY

De Laval Separators and Milkers

OIL AND REPAIR PARTS

GRANGER, WASHINGTON

# **BOSSTIRESHOP**

518-W. Yakima Avenue

I Give You the Middle Man's  
Profit



**Phone 96**

**Yakima, Washington**

*For Better Eye Service*

**GRINNELL OPTICAL  
COMPANY**

*224 & Yakima Ave. Yakima Hotel Building*

**DR. LEDINGHAM**  
**Dentist**

Sunnyside - - Washington

**WHEN WE REBUILD SHOES—**  
**We Build Satisfied Customers**  
**We Guarantee All Our Work**  
**Repair While You Wait**  
Return postage on all parcels mailed to us

**SAAD SHOE SHOP**  
112 E. YAKIMA AVE. YAKIMA, WASH.

*Your Patronage is Solicited and  
Appreciated by*

**A. J. NICHOLS**

**WATCHMAKER and JEWELER**

Sunnyside, Wash.

**Yost's Candy Co.**

**Home Made Candies**

**Ice Cream**

**Light Lunches**

ASK ANYONE WHO TASTES IT

Yakima, Washington

304 W. Yakima Ave.

**Yakima's Largest  
Department Store**

Outfitters for Men, Women  
and Children. The Best  
Goods for the Price, No  
Matter What the Price.

**Barnes Woodin Co.**

Yakima

- - - -

Washington





## The Palms

SOFT DRINKS, CONFECTIONERY  
FRUITS, LIGHT LUNCHES, NEW  
MAGAZINES

OUR CANDIES ARE ALWAYS  
FRESH

GRANGER

WASH.

## BROWN'S PHARMACY

Prescription Experts

Also Ingersoll  
Pens — The  
biggest dollar  
value in Am-  
erica.



Other Parkers \$2.50 up

Let us show  
you our pen  
assortment.

YAKIMA AND THIRD

YAKIMA, WASH.

Walter Burnett  
YOUR HOME GROCER  
Granger, Wash.

## The Emporium Department Store

Yakima, Wash.

MEN'S, WOMEN'S AND CHILDREN'S  
WEARING APPAREL

### "S. & H" GREEN DISCOUNT STAMPS

Given on all Cash Purchases, and on  
Charge Accounts if Paid on or Before  
the 10th of Month Following Purchase.

**We pay \$1.00 for each filled Stamp Book**

L. W. LÖSCHENKÖHL

Photographer

*Successor to C. O. Merivin*

Sunnyside

Washington

*"Wear Noble Jewelry"*

**NOBLE JEWELRY CO., Inc.**  
**DIAMONDS, WATCHES, JEWELRY**

208 E. Yakima Ave.

# RED CROSS PHARMACY

*YAKIMA, WASHINGTON*



The Prescription Store

PLEATING

HEMSTITCHING

BUTTONS COVERED

BUTTON HOLES

EMBROIDERY THREAD

## PROGRESSIVE SHOP

YAKIMA, WASH.

116 E. YAKIMA AVE.

## BISCHOFFS

"BISH'LL TREAT US RIGHT"

To Save Money, do Your Trading at the Store  
that Sells for Less.

WE FEATURE

"KIRSCHBAUM" CLOTHES

THEY'RE STYLISH

**\$30.00**

**\$35.00**

**\$40.00**

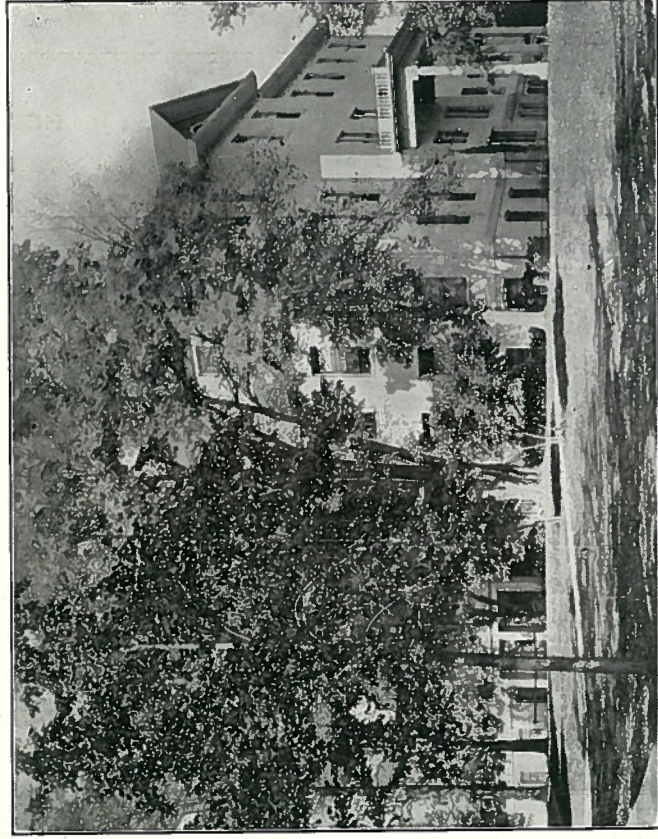
WE CARRY A COMPLETE LINE OF SHOES, HATS, AND  
FURNISHINGS

YAKIMA, WASHINGTON

107 E. YAKIMA AVE.

# Walla Walla College

*The School that Educates for Life*



A CHRISTIAN COLLEGE, BEAUTIFULLY SITUATED IN  
THE HEART OF THE WALLA WALLA VALLEY

STRONG COURSES IN THEOLOGY, THE ARTS, SCIENCES, AND  
NORMAL AND VOCATIONAL TRAINING.

OPPORTUNITY FOR WORK TO  
MINIMIZE EXPENSES

Calendars and Information Upon Request

ADDRESS:

WALLA WALLA COLLEGE, COLLEGE PLACE, WASH.



# Yakima Iron Works

*"Ask for Arrowsmith"*

Foundry, Machine Shop, Blacksmithing, Oxy-  
acetylene Welding and Cutting

**Phone 362**

301-307 South First Street  
Yakima, Washington

DR. BRADBURY

Dentist

Sunnyside - - Washington

YAKIMA VALLEY ACADEMY

*Welcomes all young people of Preparatory and Academic grade who desire a Christian Education. Calendar sent on Request. - - - - -*



# Neimans

Just a Real Good Place to Trade

—TWO STORES—

GRANGER - - - ZILLAH

Groceries

Shoes, Dry Goods

Flour, Feed

Seeds

Buster Brown Hose

Peters Shoes





# THE UNION BANK

GRANGER, WASH.

Capital \$10,000

Surplus \$5,000

AFFILIATED WITH THE UNION SECURITIES CO. OF SPOKANE, WASH.  
WHOSE PAID UP CAPITAL IS  
\$2,000,000.00

and whose officers and directors are among the most influential and substantial in the Inland Empire.

WE OFFER ABSOLUTE SECURITY TO OUR DEPOSITORS, AND FUNDS ARE  
ALWAYS AVAILABLE TO WORTHY BORROWERS FOR NON-SPECULATIVE PURPOSES

4 PER CENT INTEREST ON TIME DEPOSITS

## OFFICERS:

C. R. Havighorst, President

R. E. Pearce, Vice-President

W. M. Christensen, Cashier

## DIRECTORS:

R. E. Pearce      D. H. Clement

C. R. Havighorst

IF YOU WANT TO KNOW WHETHER OR NOT THIS IS A GOOD BANK—Ask our competitors!



